

# Alley



**PRODUCT TYPE:** Glazed colour-bodied porcelain

**COLOURS:** Charcoal and Grey

**SIZES:** 200x200mm  
Rectified edges

**FINISHES/USAGE:** Grip/Wall & floor

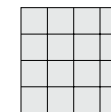
**AESTHETIC QUALITIES:** Concrete, paver look

**ORIGIN:** Spain

**TECHNICAL DATA:** P5 Pendulum Slip rating (Grip)

The Grip finish receives a Sustainable Slip Resistance value of P3 AWT after 500 cycles

**VARIATION:**



V1

Made in Spain, ALLEY is available in a 200x200mm porcelain grip format. With two colour ways and plain and decorative patterns to choose from, ALLEY can be used as an effective decorative solution to outdoor needs.

# Alley

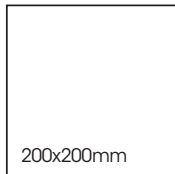
## COMPLETE SERIES

### PRODUCT SPECIFICATIONS

SIZES	FINISHES	SLIP RATING	TILE EDGE
200x200mm	GRIP	P5 Pendulum	RECTIFIED

\*The Grip finish receives a Sustainable Slip Resistance value of P3 AWT after 500 cycles

### FORMATS



ALLEY CHARCOAL GRIP



ALLEY MOTIF CHARCOAL GRIP



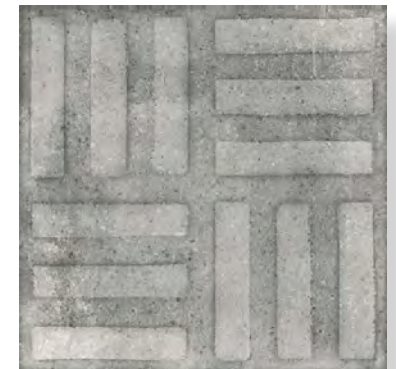
ALLEY PARQUET CHARCOAL GRIP



ALLEY GREY GRIP



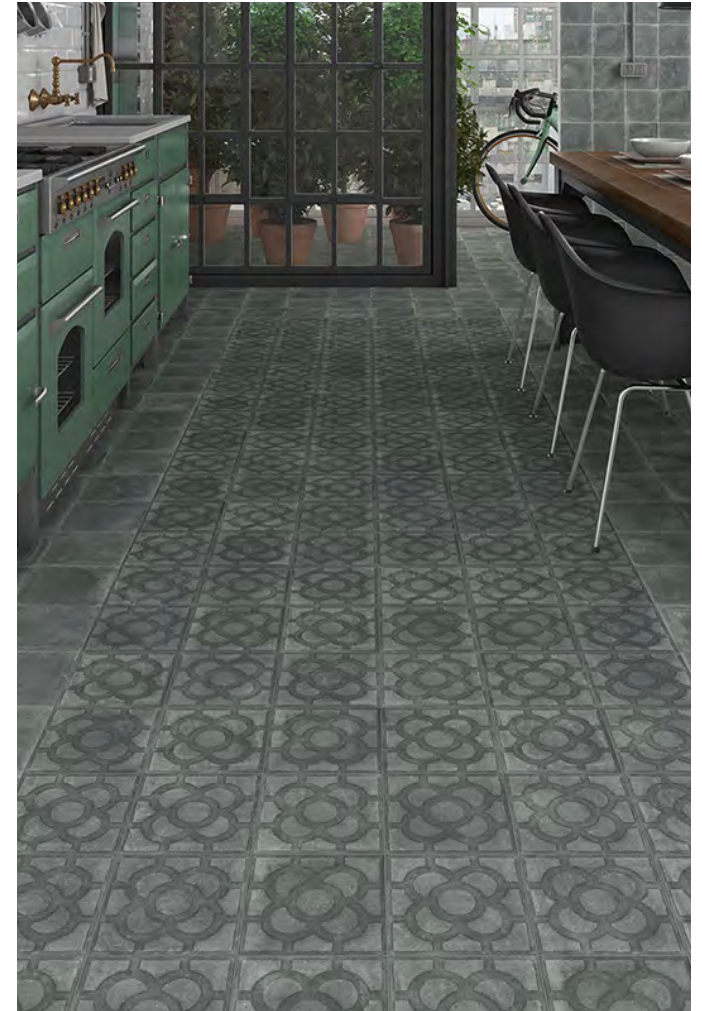
ALLEY MOTIF GREY GRIP



ALLEY PARQUET GREY GRIP



# Alley










# Alley



## TECHNICAL DATA

	<b>technical characteristics</b>	<b>test method</b>	<b>value</b>
	water absorption	iso 10545-3	E < 0,5%
	frost resistance	iso 10545-12	It stands the test
	thermal shock resistance	iso 10545-9	It stands the test
	chemical resistance to cleaning products	iso 10545-13	Type GLA
	stain resistance	iso 10545-14	Class 5