

Core



CORE comes in eight neutral colours in three finishes, expressing enormous versatility for projects of any size. The CORE series is divided into a cool and warm colour scheme, allowing you to create a cohesive colour palette with ease. Designers can achieve a minimal look or a decorative look, the possibilities are huge.

PRODUCT TYPE: Glazed colour bodied porcelain

COLOURS: Warm Ivory, Warm Grey, Warm Taupe, Warm Charcoal, Cool Silver, Cool Grey, Cool Charcoal and Cool Black.

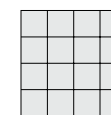
SIZES: 100x200mm, 300x300mm, 300x600mm and 600x600mm (Matt)
300x300mm and 300x600mm (Grip)
Rectified edges

FINISHES/USAGE: Matt 'P3' X Pendulum Slip Rating and Grip 'P4' W Pendulum Slip Rating/Floor and Wall

AESTHETIC QUALITIES: Soft neutral movement

TECHNICAL DATA: Technical data on the last page

VARIATION:



V1

Core

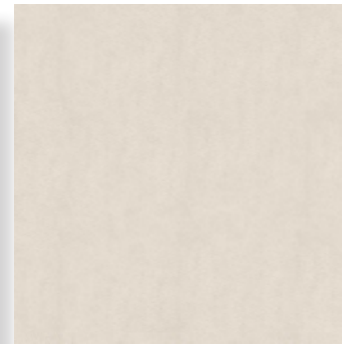
PRODUCT SPECIFICATIONS

SIZES	FINISHES	SLIP RATING	TILE EDGE
100x200mm	MATT	P3 X Pendulum	RECTIFIED
300x300mm	MATT	P3 X Pendulum	RECTIFIED
300x600mm	MATT	P3 X Pendulum	RECTIFIED
600x600mm	MATT	P3 X Pendulum	RECTIFIED
300x300mm	GRIP	P4 W Pendulum	RECTIFIED
300x600mm	GRIP	P4 W Pendulum	RECTIFIED

WARM IVORY

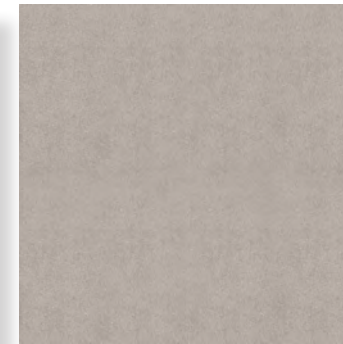


MATT



GRIP

WARM GREY

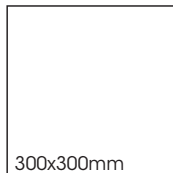


MATT

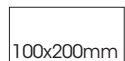


GRIP

FORMATS



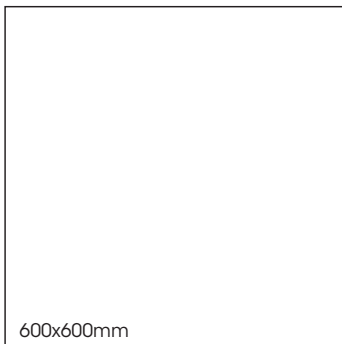
300x300mm



100x200mm

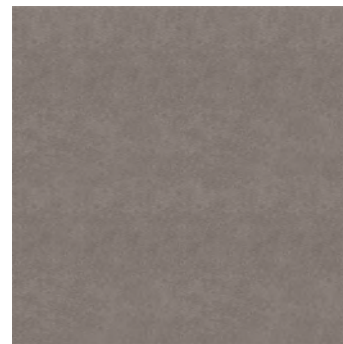


300x600mm

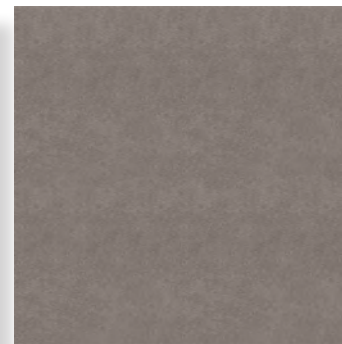


600x600mm

WARM TAUPE

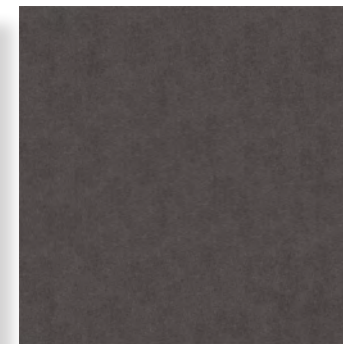


MATT



GRIP

WARM CHARCOAL



MATT



GRIP

Core

PRODUCT SPECIFICATIONS

SIZES	FINISHES	SLIP RATING	TILE EDGE
100x200mm	MATT	P3 X Pendulum	RECTIFIED
300x300mm	MATT	P3 X Pendulum	RECTIFIED
300x600mm	MATT	P3 X Pendulum	RECTIFIED
600x600mm	MATT	P3 X Pendulum	RECTIFIED
300x300mm	GRIP	P4 W Pendulum	RECTIFIED
300x600mm	GRIP	P4 W Pendulum	RECTIFIED

COOL SILVER



MATT



GRIP

COOL GREY

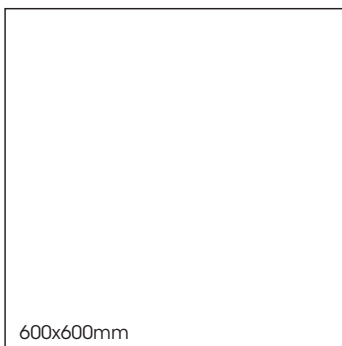
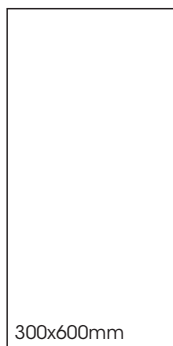
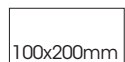
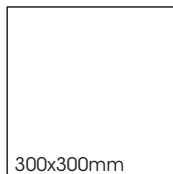


MATT



GRIP

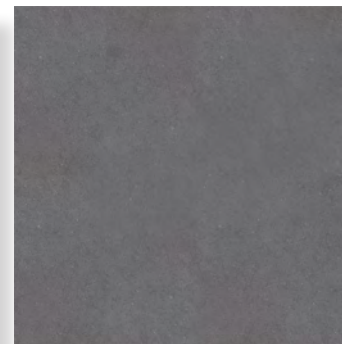
FORMATS



COOL CHARCOAL

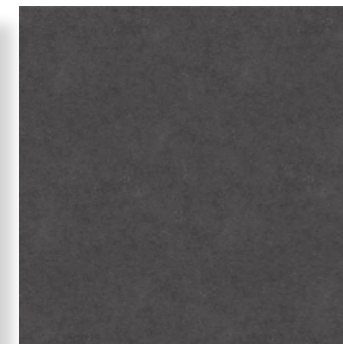


MATT

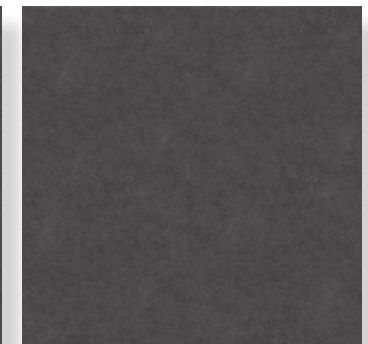


GRIP

COOL BLACK









MATT



GRIP

Core



	technical characteristics Group B I a	test method	required values	value
	water absorption	iso 10545-3	≤ 0,5%	0.21%
	bending strength	iso 10545-4	≥ 12MPA	≥ 33.5MPA
	breaking strength (S)	iso 10545-4	≥ 350 N	≥ 1785N
	abrasion resistace	iso 10545-7	Max. 175 mm ³ PEI 1-5	Class3
	chemical resistance	iso 10545-13	Household chemicals and swimming pool salts Low concentration of acids and alkalis	GA GLA
	stain resistance	iso 10545-14	Minimum Class 3	Class 5