

skheme®

neutra



# neutra



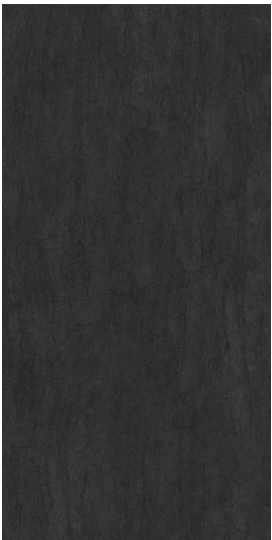
calacatta



pearl



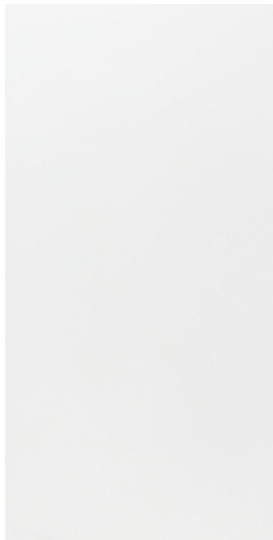
taj mahal



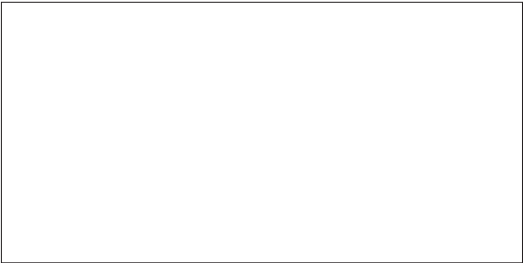
basalt



grey



white



1600x3200x12mm



1200x2800x6mm



fire resistant



slab available



V1 variation

## PRODUCT SPECIFICATIONS

format	size	finish	thickness	slip rating	colour
tile	1200x2800mm	honed	6mm	N/A	white
slab	1600x3200mm	honed	12mm	N/A	white
slab	1600x3200mm	mat	12mm	N/A	taj mahal
slab	1600x3200mm	natural	12mm	N/A	pearl   grey   basalt
slab	1600x3200mm	high honed	12mm	N/A	calacatta

## MATERIAL

glazed porcelain

## VARIATION

V1

## TILE EDGE

rectified - 6mm | non-rectified - 12mm

Colours shown in images may differ due to variations in photographic conditions and screen displays. Samples provided may not accurately reflect the exact shade or batch supplied, as variation is an inherent property of tiles and stone.

Listed sizes and thicknesses are nominal and may vary slightly from actual working dimensions.

A 2/12-14 Neild Avenue Rushcutters Bay NSW 2010 | P 02 8755 2300 | W [www.skheme.com](http://www.skheme.com) | E [info@skheme.com](mailto:info@skheme.com)



left pictured: grey  
right pictured: pearl



# technical data

PROPERTIES	TEST METHOD	PRESCRIBED VALUES	VALUE
water absorption	ISO 10545-3	≤0.5%	0.04%
modulus of rupture	ISO 10545-4	minimum 35 MPa	53.4 MPa
breaking strength	ISO 10545-4	≥ 1300	4958
abrasion resistance	ISO 10545-7	Max. 175 mm <sup>3</sup> PEI 1-5	class 4
resistance to chemicals	ISO 10545-13	Household chemicals & swimming pool salts	class 5
		Low concentration of acids & alkalis	class 5
resistance to staining	ISO 10545-14	Minimum class 3	class 5



Please note that all products must be fabricated using score & snap method and/or wet cutting in conjunction with AS/NZS 1716:2012, AS/NZS 1715:2009, AS/NZS 60335.2.69:2017. For more information please refer to: <https://www.safework.nsw.gov.au>