

skheme®

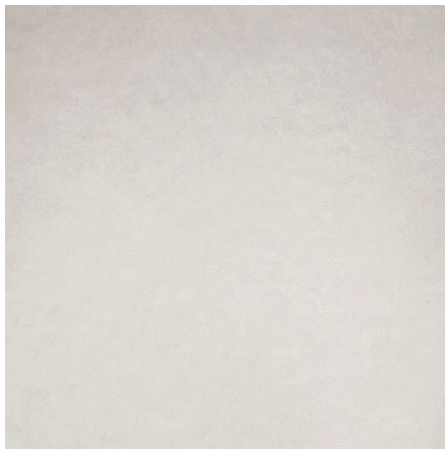
---

cotto 2.0

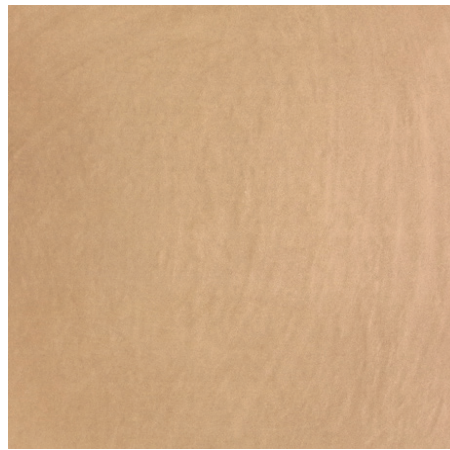
---

# cotto 2.0

Boasting a beautiful textured surface, Cotto 2.0 captures the warm variations of natural terracotta and is suitable for wall and floor applications. Available in contemporary sizes, this tile infuses spaces with sophisticated Mediterranean flair.



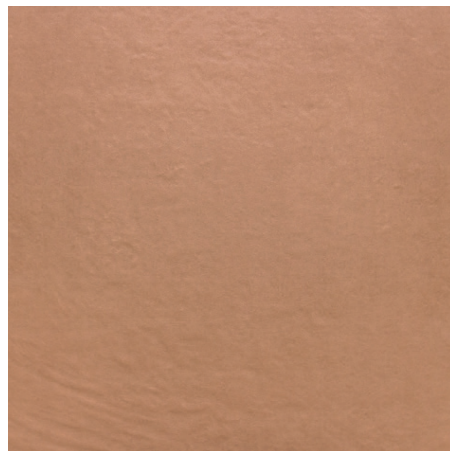
white matt



aldea matt



neutra matt



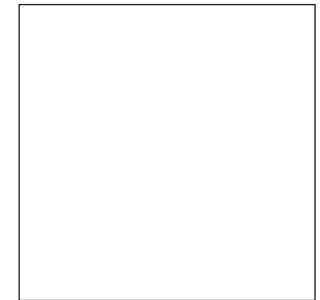
cuero matt



75x300mm



150x300mm



600x600mm



flame resistant



variation V2



slip rating P3

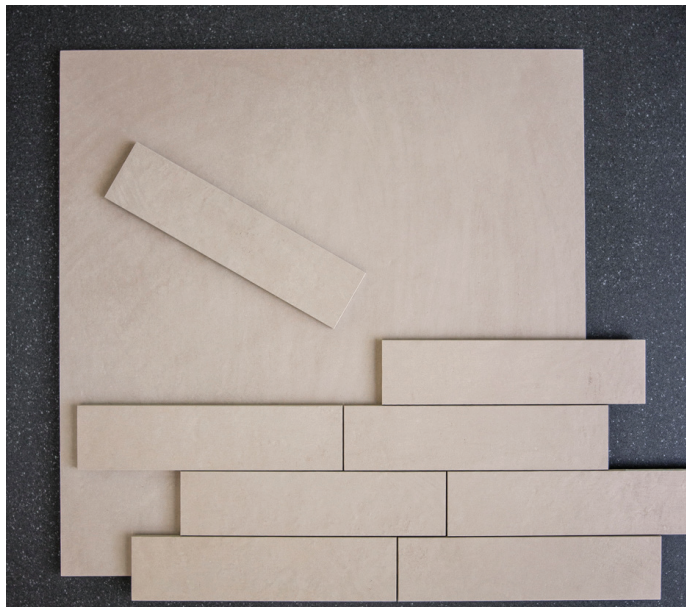
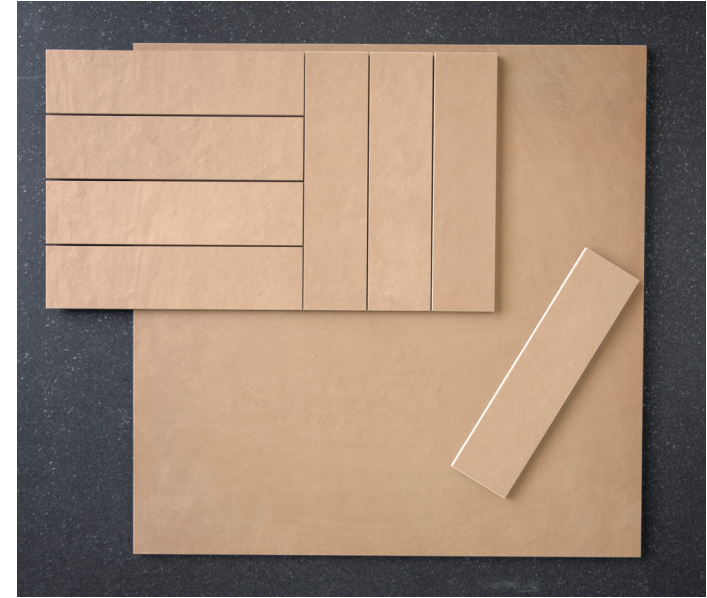
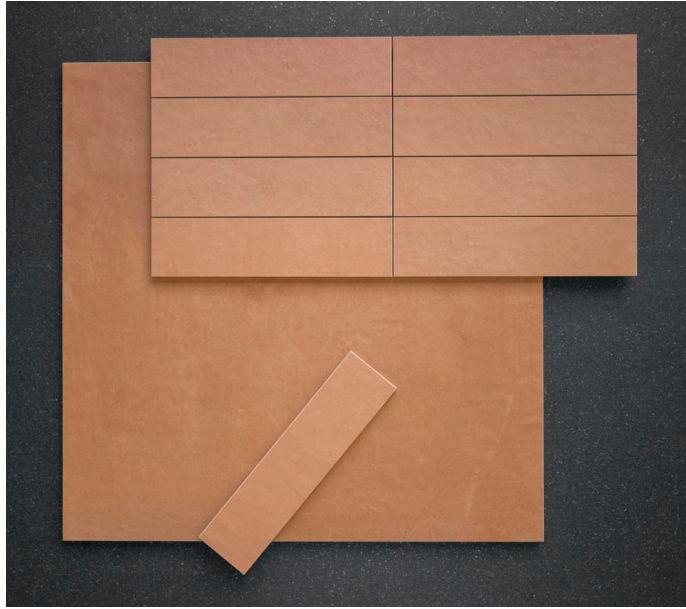
DIMENSIONS	<b>brick format</b>	75x300mm 150x300mm 600x600mm	matt matt matt	all colours neutra   aldea   cuero all colours
MATERIAL				glazed porcelain
VARIATION				V2
TILE EDGE				rectified
THICKNESS			tile	10mm
SLIP RATING		matt	P3	indoor & outdoor

**Bricklays Pictured:**

*Left: Cuero*

*Right: Aldea*

*Bottom Left: Neutra*



## technical data

PROPERTIES	TEST METHOD	PRESCRIBED VALUES	VALUE
water absorption	ISO 10545-3	≤0.5%	≤0.2%
bending strength	ISO 10545-4	≥ 35 N/ mm <sup>2</sup>	compliant
thermal shock resistance	ISO 10545-9	No sample must show visible defects	compliant
deep abrasion resistance	ISO 10545-6	≤ 175 mm <sup>3</sup>	compliant
resistance to chemicals	ISO 10545-13	Declared value	compliant
resistance to frost	ISO 10545-12	Resistant	compliant
resistance to staining	ISO 10545-14	Minimum class 3	compliant
surface quality	ISO 10545-2	Complies with the standards	≥ 95%



Please note that all products must be fabricated using score & snap method and/or wet cutting in conjunction with AS/NZS 1716:2012, AS/NZS 1715:2009, AS/NZS 60335.2.69:2017. For more information please refer to: <https://www.safework.nsw.gov.au>

Variation is an inherent property of tiles and stone. Sizes are nominal and may include a joint.

A 2/12-14 Neild Avenue Rushcutters Bay NSW 2010 | P 02 8755 2300 | W [www.skheme.com](http://www.skheme.com) | E [info@skheme.com](mailto:info@skheme.com)