

skheme®

---



monterey

---



# monterey

Monterey embodies the elegance of natural stone, integrating an authentic and organic essence that enhances any space with a warm and inviting allure.



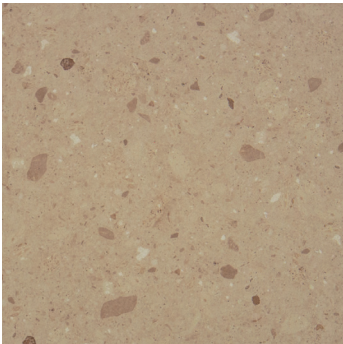
pearl



tawn



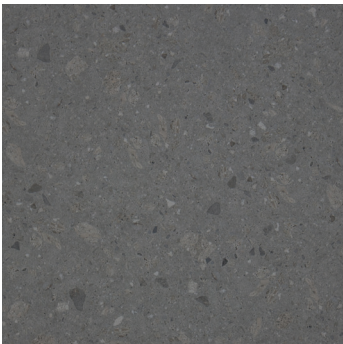
mink



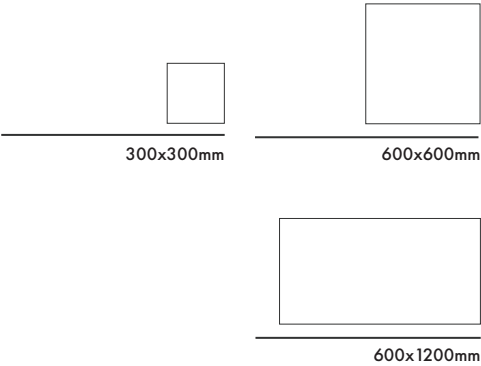
cotto



argent



bluestone



fire resistant



slip rating P3



slip rating P5



variation V2

DIMENSIONS	300x300   600x600	natural	all colours
	600x600	grip	all colours
	600x1200	natural	pearl   tawn
			argent   bluestone
MATERIAL			glazed porcelain
VARIATION			V2
TILE EDGE			rectified
THICKNESS		tile	6mm
SLIP RATING		natural grip	P3 P5 indoor outdoor

## technical data

PROPERTIES	TEST METHOD	PRESCRIBED VALUES	VALUE
water absorption	ISO 10545-3	≤0.5%	0.21%
bending strength	ISO 10545-4	≥ 12 MPA	≥ 33.5MPA
breaking strength	ISO 10545-4	≥ 350 N	≥ 1785N
abrasion resistance	ISO 10545-7	Max. 175 mm <sup>3</sup> PEI 1-5	class 3
resistance to chemicals	ISO 10545-13	Household chemicals & swimming pool salts	GA
		Low concentration of acids & alkalis	GLA
resistance to staining	ISO 10545-14	Minimum class 3	class 5



Please note that all products must be fabricated using score & snap method and/or wet cutting in conjunction with AS/NZS 1716:2012, AS/NZS 1715:2009, AS/NZS 60335.2.69:2017. For more information please refer to: <https://www.safework.nsw.gov.au>

Variation is an inherent property of tiles and stone. Sizes are nominal and may include a joint.

A 2/12-14 Neild Avenue Rushcutters Bay NSW 2010 | P 02 8755 2300 | W [www.skheme.com](http://www.skheme.com) | E [info@skheme.com](mailto:info@skheme.com) |