

Venetian



Made in Italy, VENETIAN is an agglomerate made of random mixtures of stone marble chips. It is a versatile product as it can be installed in large commercial projects or private residences. Featuring six colours and is available in both tile and slab formats

PRODUCT TYPE: Agglomerate marble

COLOURS: Ice, Creme, Brooklyn, Rose, Cotto, Jade and Armory

SIZES: 600x600x12mm and 1240x3050x20mm slab
Rectified edges

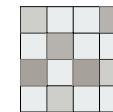
FINISHES/USAGE: Honed/Wall and Floor

AESTHETIC QUALITIES: Beautiful and colourful marble chips

TECHNICAL INFO: Use fast setting adhesive suitable for moisture sensitive stone such as Mapei Granirapid
Use stone sensitive grout and silicone.
Seal before and after grouting.
More information on last page.

ORIGIN: Italy

VARIATION:



V4

CERTIFICATIONS:

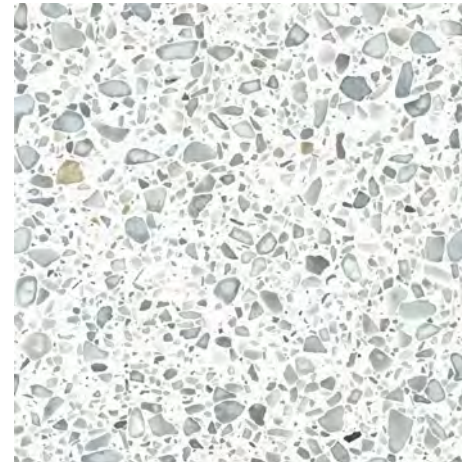
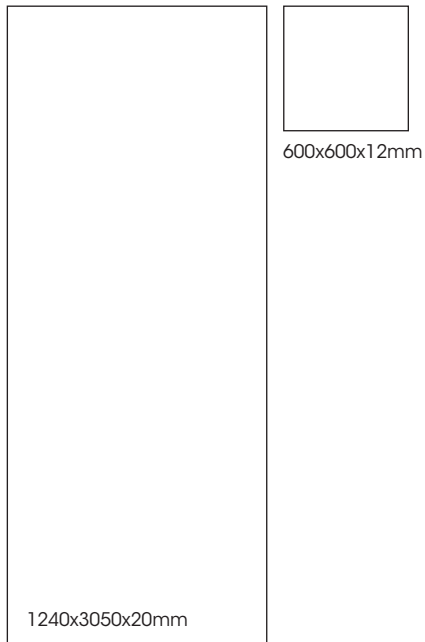


Venetian

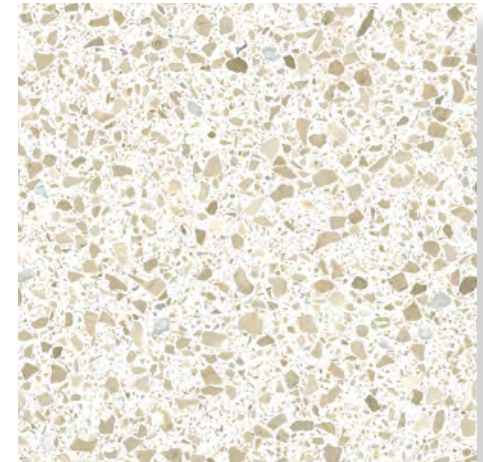
PRODUCT SPECIFICATIONS

SIZES	FINISHES	TILE EDGE
600x600x12mm	HONED	RECTIFIED
1240x3050x20mm	HONED SLAB	RECTIFIED

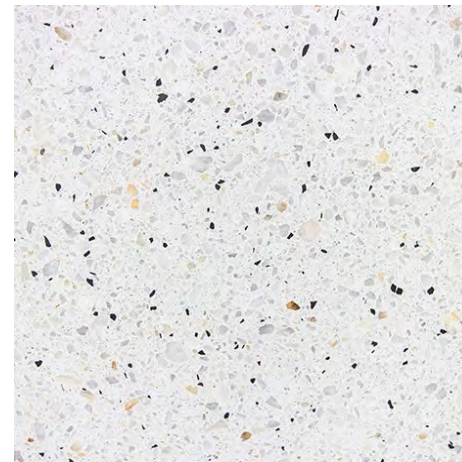
FORMATS



ICE



CREME



BROOKLYN



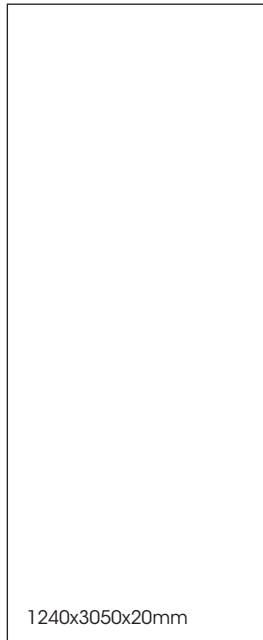
ROSE

Venetian

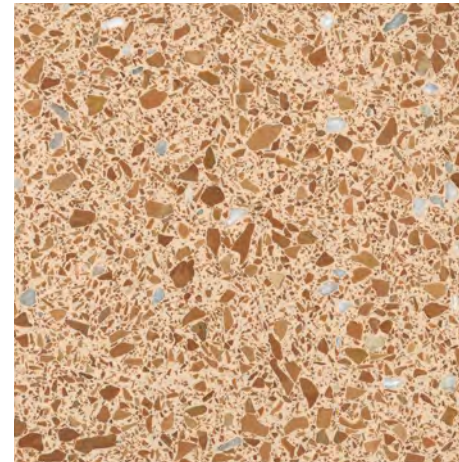
PRODUCT SPECIFICATIONS

SIZES	FINISHES	TILE EDGE
600x600x12mm	HONED	RECTIFIED
1240x3050x20mm	HONED SLAB	RECTIFIED

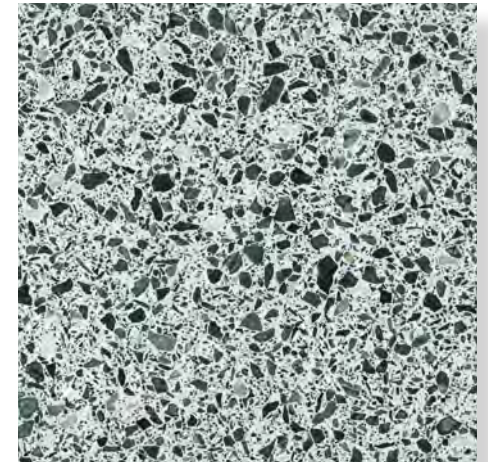
FORMATS



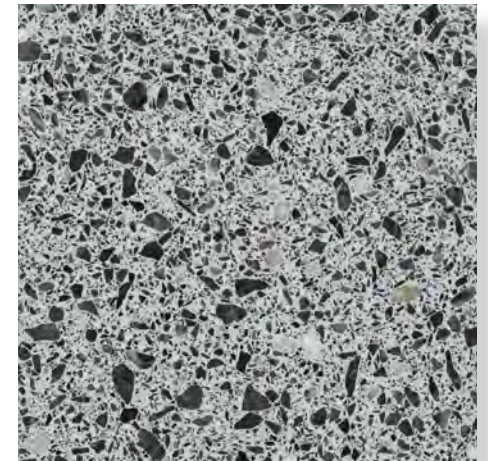
600x600x12mm



COTTO



JADE



ARMORY

Venetian

ICE HONED SLAB



Venetian

CREME HONED SLAB



Venetian

BROOKLYN HONED SLAB



Venetian

ROSE HONED SLAB



Venetian

COTTO HONED SLAB



Venetian

JADE HONED SLAB



Venetian

ARMORY HONED SLAB



Venetian



Venetian



Venetian



Venetian

TECHINICAL DATA

technical characteristics	test method	unit	result
Water absorption	EN - 14617/1	%w/w	< 0,25
Density	EN - 14617/1	Kg/dm ³	2,40 - 2,65
Flexural strength	EN - 14617/2	MPa	> 15
Compressive strength	EN - 14617/15	MPa	> 80
Abrasion resistance	EN - 14617/4	mm	33 - 38.5
Linear thermal expansion	EN - 14617/11	°C-1	15 -21 x 10 ⁻⁶
Dynamic coefficient of friction	ANSI A.137.1:2012	Honed 200	> 0.42
Dimensional stability	EN - 14617/12 (60 x 60 x 2)cm	Class	A
Freeze and thaw resistance	EN - 14617/5	-	Variable depending upon marble type
Reaction to fire	EN - 13501/1	-	A2 fl - S1

Venetian

CERTIFICATIONS



The GREENGUARD Environmental Institute is an industry-independent organisation with a mission to improve indoor air quality and reduce people's exposure to chemicals and other pollutants. As an ISO-IEC Guide 65:1996 accredited, third-party organization, the GREENGUARD Environmental Institute certifies products and materials for low chemical emissions and provides a resource for choosing healthier products and materials for indoor environments. Certified products must meet chemical emissions standards based on established criteria from key public health agencies.



LEED V4 (Leadership in Energy and Environmental Design) is an internationally recognized green building certification system, providing third-party verification that a building or community was designed and built using strategies aimed at improving performance across all the metrics that matter most: energy savings, water efficiency, CO2 emissions reduction, improved indoor environmental quality, and stewardship of resources and sensitivity to their impacts.



WELL Building Standard is a performance-based system that explores how design, operations and behaviors within the places where we live, work, learn and play can be optimized to advance human health and well-being as well as a flexible building standard and represents the future of design; It's the first rating system to focus exclusively on the impacts of buildings on human health and wellness.

Skheme Venetian Terrazzo is produced by industry leaders and technical innovators since 1965 representing a new trend of Terrazzo products with focus on high-performance, low maintenance surfaces.

By using Q Zero technology, the amalgamation of polyester resin with min 90% Marble produces a superior product containing 75% recycled content, low water absorption while maintaining excellent technical and aesthetic qualities.

Please note: Natural Stone aggregates bound by either epoxy or polyester resin with added UV absorbers and stabilizers requires wet fabrication.

Content: Marble 90-92% | Polyester Resin 8-10%

- Auto ignition: Combustibility extremely difficult
- Fire Spreading Rating: 5
- Smoke Development Rating: 25
- Flash Point: 490°C
- Flammable Limits in Air: N/A
- Extinguishing Media: Water, Dry Chemical, CO2, Foam