

Buxi



PRODUCT TYPE: Glazed Porcelain

COLOURS: Ivory, Silver, Grey and Black

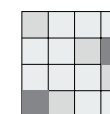
SIZES: 300x300mm, 300x600mm and
600x600mm
Rectified edges

FINISHES/USAGE: Matt/Wall and Floor

AESTHETIC QUALITIES: Natural Movement

TECHNICAL INFO: P3 Pendulum slip rating (Matt)
More technical data on the last page

VARIATION:



V2

CERTIFICATIONS:



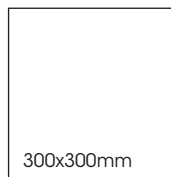
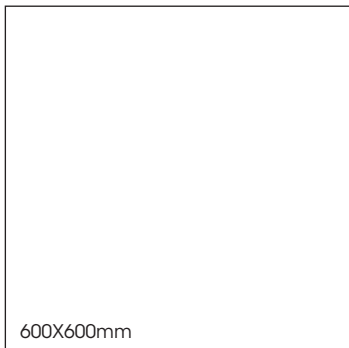
BUXI features realistic natural movement and textures seen in stone and is available in four organic colours and two sizes.

Buxi

PRODUCT SPECIFICATIONS

SIZES	FINISHES	SLIP RATING	TILE EDGE
300x300mm	MATT	P3 Pendulum	RECTIFIED
300x600mm	MATT	P3 Pendulum	RECTIFIED
600x600mm	MATT	P3 Pendulum	RECTIFIED

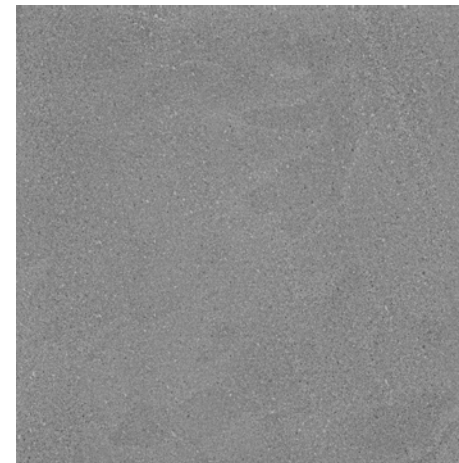
FORMATS



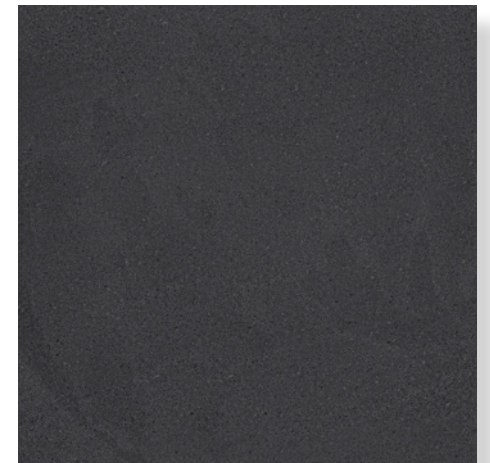
IVORY MATT



SILVER MATT

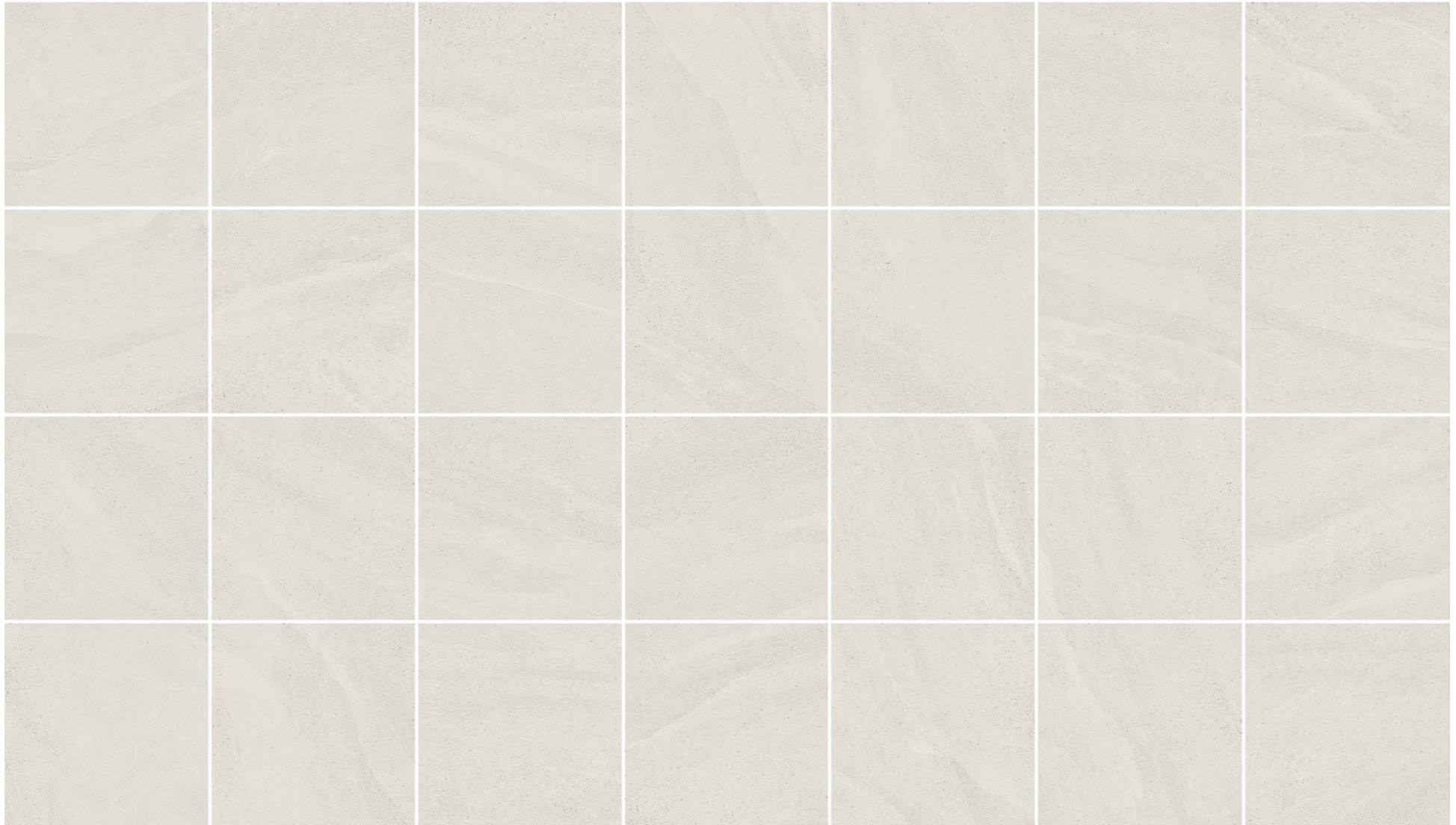


GREY MATT



BLACK MATT

IVORY VARIATION



Buxi

SILVER VARIATION



Buxi

GREY VARIATION



Variation is an inherent property of tiles and stone. Sizes are nominal and may include a joint.

Buxi

BLACK VARIATION



Buxi



TECHNICAL DATA

Technical Characteristic	Test Method	Requirement	Result
Surface quality	ISO 10545-2	95%	100%
Length and Width	ISO 10545-2	± 0,6%	0.5%
Thickness	ISO 10545-2	± 0,5	± 0,5
Straightness of sides	ISO 10545-2	± 0,5%	± 0,3%
Water Absorbtion	ISO 10545-3	≤ 3%	≤ 3%
Modulus of Rupture	ISO 10545-4	≥ 35	≥ 38
Breaking Strength	ISO 10545-4	≥ 1100	≥ 1300
Crazing Resistance	ISO 10545-11	Pass	Resistant
Chemical Resistance	ISO 10545-13	Declared Value	ULA / UHB
Stain Resistance	ISO 10545-14	Minimum Class 3	Class 5

CERTIFICATIONS



ISO 14001:2015 specifies the requirements for an environmental management system that an organization can use to enhance its environmental performance. ISO 14001:2015 is intended for use by an organization seeking to manage its environmental responsibilities in a systematic manner that contributes to the environmental pillar of sustainability.