

Zone



PRODUCT TYPE: Glazed porcelain

COLOURS: Pearl, Pale Taupe and Deep Taupe

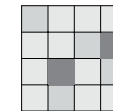
SIZES: 300x600mm and 600x600mm
Rectified Edges

FINISHES/USAGE: Matt, Semi-Polish and Grip/Wall and Floor

AESTHETIC QUALITIES: Exposed aggregate, concrete look

TECHNICAL INFO: P3 Pendulum slip rating (Matt)
P5 Pendulum slip rating (Grip)
More technical data on the last page

VARIATION:



V2

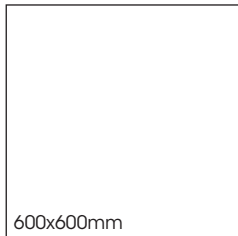
Our ZONE series has the impact of concrete, with all the cost effective benefits of porcelain. The series has a neutral colour palette with easy maintenance finishes and formats suitable for new or existing projects.

Zone

PRODUCT SPECIFICATIONS

SIZES	FINISHES	SLIP RATING	TILE EDGE
300X600mm	MATT	P3 Pendulum	RECTIFIED
600x600mm	MATT	P3 Pendulum	RECTIFIED
300X600mm	SEMI-POLISH	-	RECTIFIED
300x600mm	GRIP	P5 Pendulum	RECTIFIED

FORMATS



PEARL



MATT



SEMI-POLISH



GRIP

PALE TAUPE



MATT



SEMI-POLISH



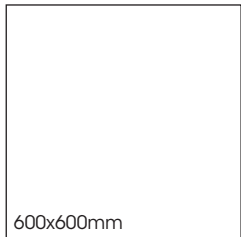
GRIP

Zone

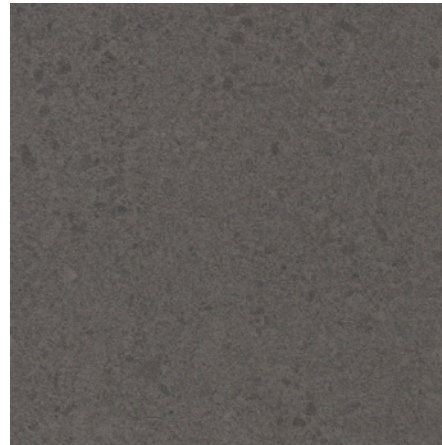
PRODUCT SPECIFICATIONS

SIZES	FINISHES	SLIP RATING	TILE EDGE
300X600mm	MATT	P3 Pendulum	RECTIFIED
600x600mm	MATT	P3 Pendulum	RECTIFIED
300X600mm	SEMI-POLISH	-	RECTIFIED
300x600mm	GRIP	P5 Pendulum	RECTIFIED

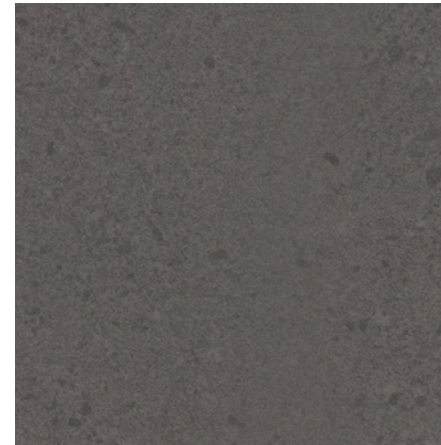
FORMATS



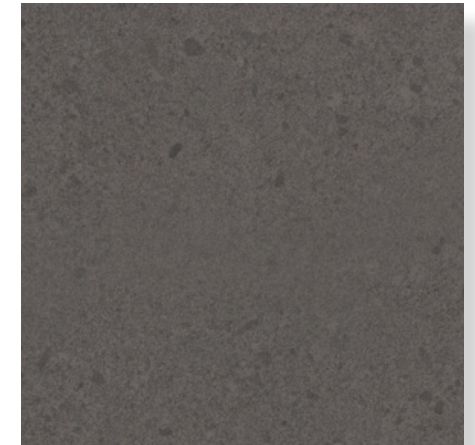
DEEP TAUPE



MATT



SEMI-POLISH










GRIP

Zone



TECHNICAL DATA

	technical characteristics	test method	required values	result
	water absorption	ISO 10545-3	Average: E ≤ 0.5%	0.29% - pass
	modulus of rupture	ISO 10545-4	Minimum 35MPa	Average:36.6MPa - pass
	breaking strength	ISO 10545-4	Thickness ≥ 7.5mm, Not less than 1300N	1988N - pass
	crazing resistance	ISO 10545-11	required	fully resistant
	abrasion resistance	ISO 10545-7	stated class	Class 2
	chemical resistance	ISO 10545-13	test method available	GLA, GA
	stain resistance	ISO 10545-14	Min class 3	class 5