

# Core



**PRODUCT TYPE:** Colour-bodied porcelain

**COLOURS:** Warm Ivory, Warm Grey, Warm Taupe, Warm Charcoal, Cool Silver, Cool Grey, Cool Charcoal and Cool Black.

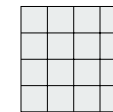
**SIZES:** 300x300mm, 300x600mm and 600x600mm (Matt)  
300x600mm (Grip)  
Rectified edges

**FINISHES/USAGE:** Matt and Grip/Wall and Floor

**AESTHETIC QUALITIES:** Soft neutral movement

**TECHNICAL DATA:** P3 Pendulum Slip Rating (Matt)  
P4 Pendulum Slip Rating (Grip)  
More technical data on the last page

**VARIATION:**



V1

CORE comes in eight neutral colours in three finishes, expressing enormous versatility for projects of any size. The CORE series is divided into a cool and warm colour scheme, allowing you to create a cohesive colour palette with ease. Designers can achieve a minimal look or a decorative look, the possibilities are huge.

# Core

## WARM SCHEME

### PRODUCT SPECIFICATIONS

SIZES	FINISHES	SLIP RATING	TILE EDGE
300x300mm	MATT	P3 Pendulum	RECTIFIED
300x600mm	MATT	P3 Pendulum	RECTIFIED
600x600mm	MATT	P3 Pendulum	RECTIFIED
300x600mm	GRIP	P4 Pendulum*	RECTIFIED

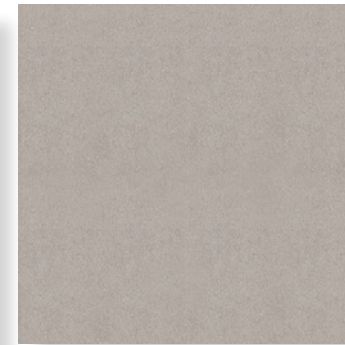
\* AWT P4 Pendulum slip rating (500 cycles)



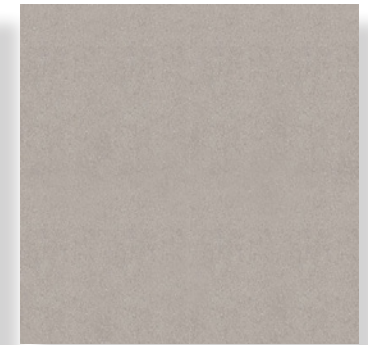
WARM IVORY MATT



WARM IVORY GRIP

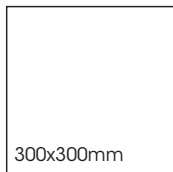


WARM GREY MATT

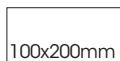


WARM GREY GRIP

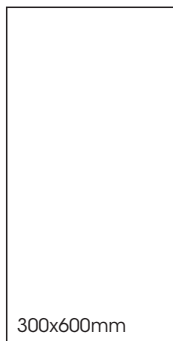
### FORMATS



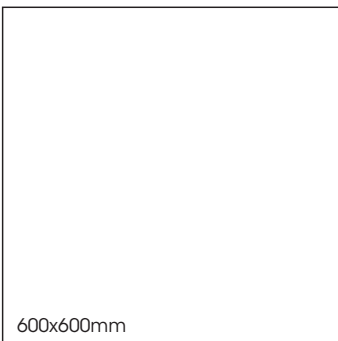
300x300mm



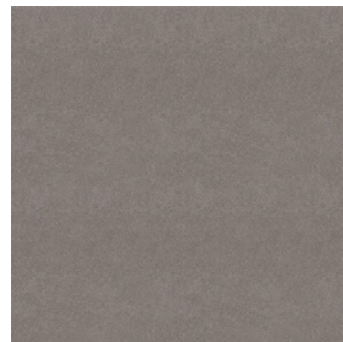
100x200mm



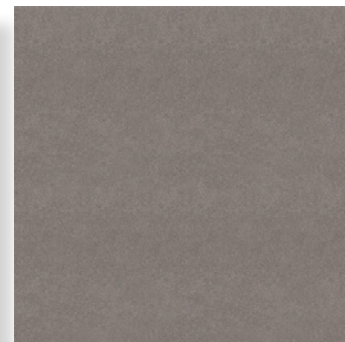
300x600mm



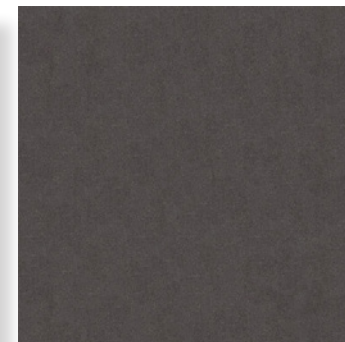
600x600mm



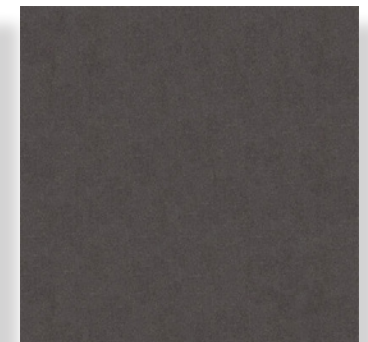
WARM TAUPE MATT



WARM TAUPE GRIP



WARM CHARCOAL MATT



WARM CHARCOAL GRIP

Variation is an inherent property of tiles and stone. Sizes are nominal and may include a joint.

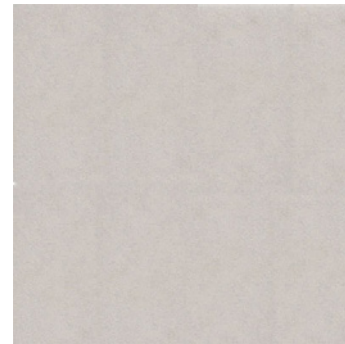
# Core

## COOL SCHEME

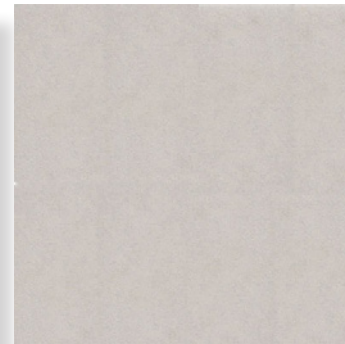
### PRODUCT SPECIFICATIONS

SIZES	FINISHES	SLIP RATING	TILE EDGE
300x300mm	MATT	P3 Pendulum	RECTIFIED
300x600mm	MATT	P3 Pendulum	RECTIFIED
600x600mm	MATT	P3 Pendulum	RECTIFIED
300x600mm	GRIP	P4 Pendulum*	RECTIFIED

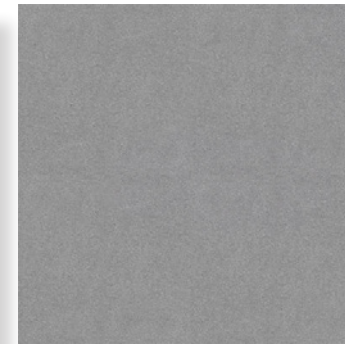
\* AWT P4 Pendulum slip rating (500 cycles)



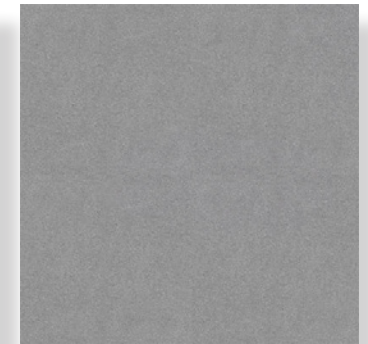
COOL SILVER MATT



COOL SILVER GRIP

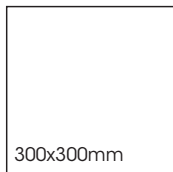


COOL GREY MATT

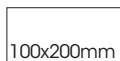


COOL GREY GRIP

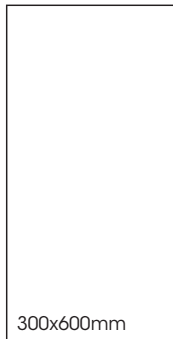
### FORMATS



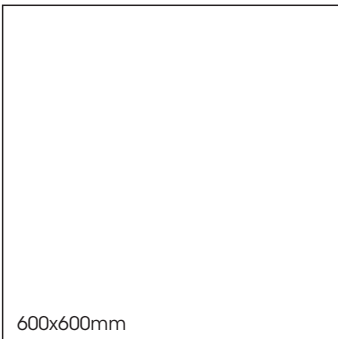
300x300mm



100x200mm



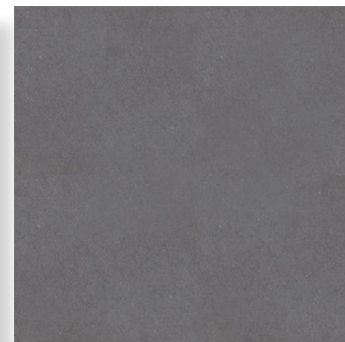
300x600mm



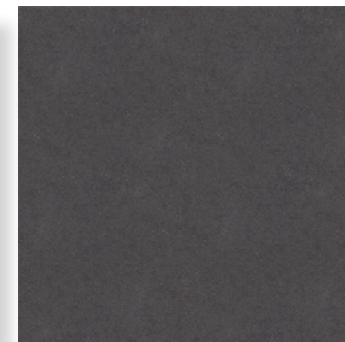
600x600mm



COOL CHARCOAL MATT



COOL CHARCOAL GRIP



COOL BLACK MATT



COOL BLACK GRIP

Variation is an inherent property of tiles and stone. Sizes are nominal and may include a joint.







# Core



# Core



## TECHNICAL DATA

	technical characteristics Group B I a	test method	required values	va ue I
	water absorption	iso 10545-3	≤ 0,5%	0.21%
	bending strength	iso 10545-4	≥ 12MPA	≥ 33.5MPA
	breaking strength (S)	iso 10545-4	≥ 350 N	≥ 1785N
	abrasion resistace	iso 10545-7	Max. 175 mm <sup>3</sup> PEI 1-5	Class3
	chemical resistance	iso 10545-13	Household chemicals and swimming pool salts	GA
			Low concentration of acids and alkalis	GLA
	stain resistance	iso 10545-14	Minimum Class 3	Class 5