

Buxi



PRODUCT TYPE: Glazed Porcelain

COLOURS: Ivory, Silver, Grey and Black

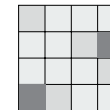
SIZES: 300x300mm, 300x600mm and
600x600mm
Rectified edges

FINISHES/USAGE: Matt/Wall and Floor

AESTHETIC QUALITIES: Natural Movement

TECHINICAL INFO: P3 Pendulum slip rating (Matt)

VARIATION:



V2

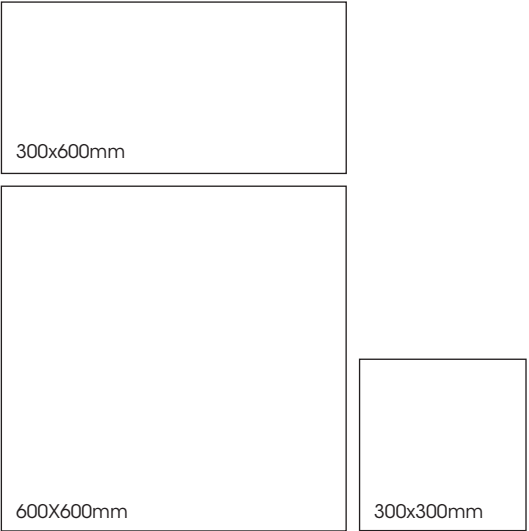
BUXI features realistic natural movement and textures seen in stone and is available in four organic colours and two sizes.

Buxi

PRODUCT SPECIFICATIONS

SIZES	FINISHES	SLIP RATING	TILE EDGE
300x300mm	MATT	P3 Pendulum	RECTIFIED
300x600mm	MATT	P3 Pendulum	RECTIFIED
600X600mm	MATT	P3 Pendulum	RECTIFIED

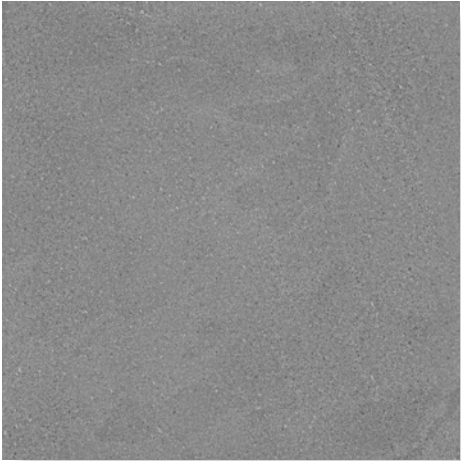
FORMATS



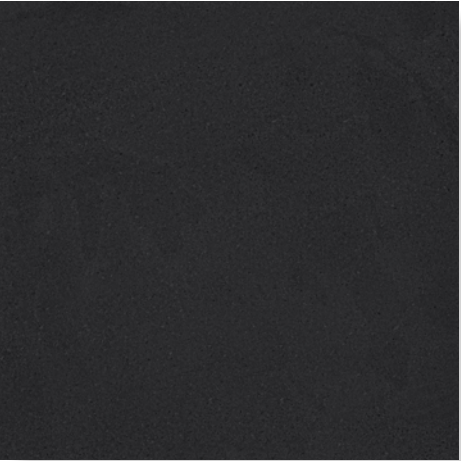
IVORY MATT



SILVER MATT



GREY MATT

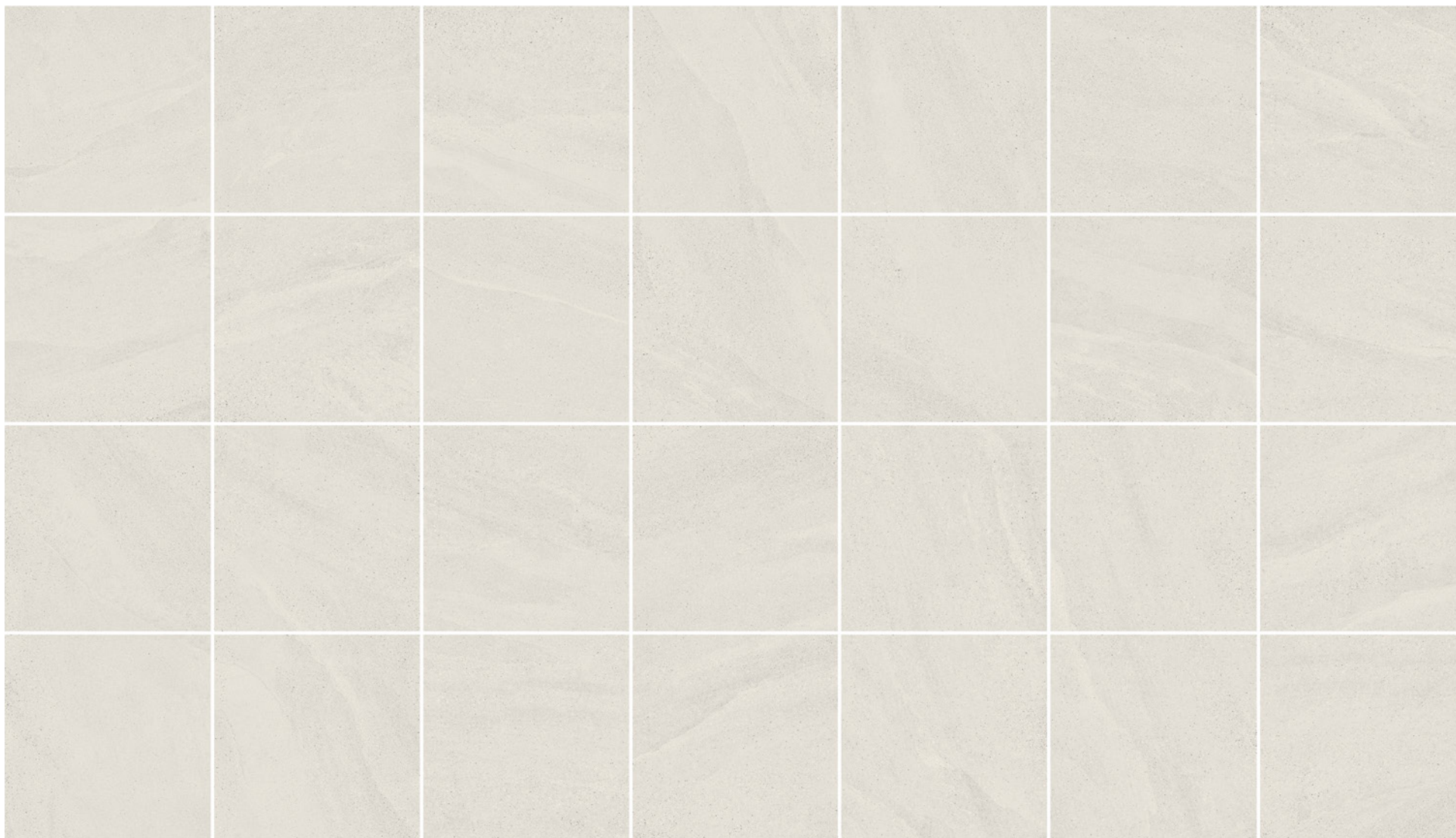


BLACK MATT*

Variation is an inherent property of tiles and stone. Sizes are nominal and may include a joint.

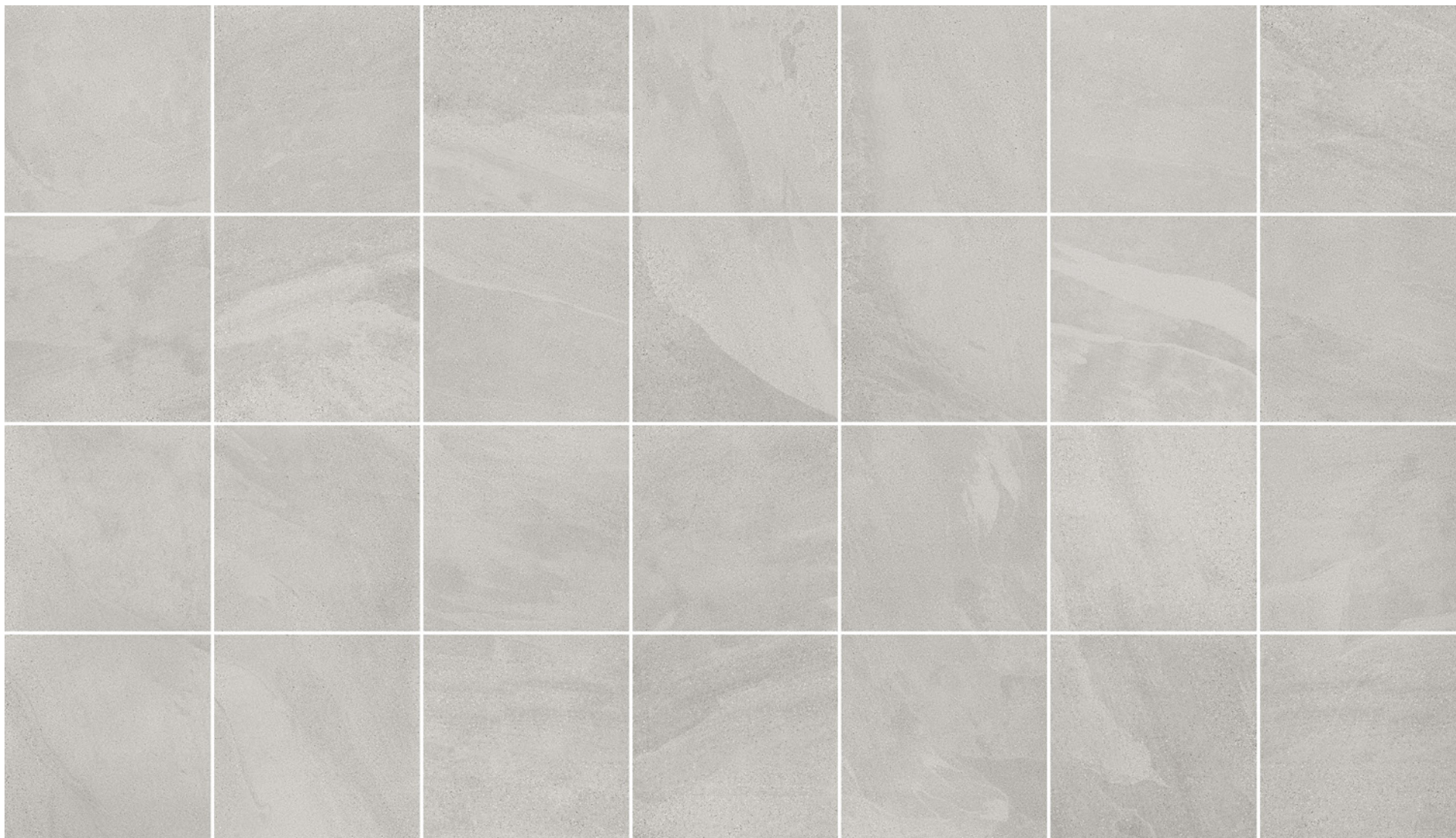
Buxi

IVORY VARIATION



Buxi

SILVER VARIATION



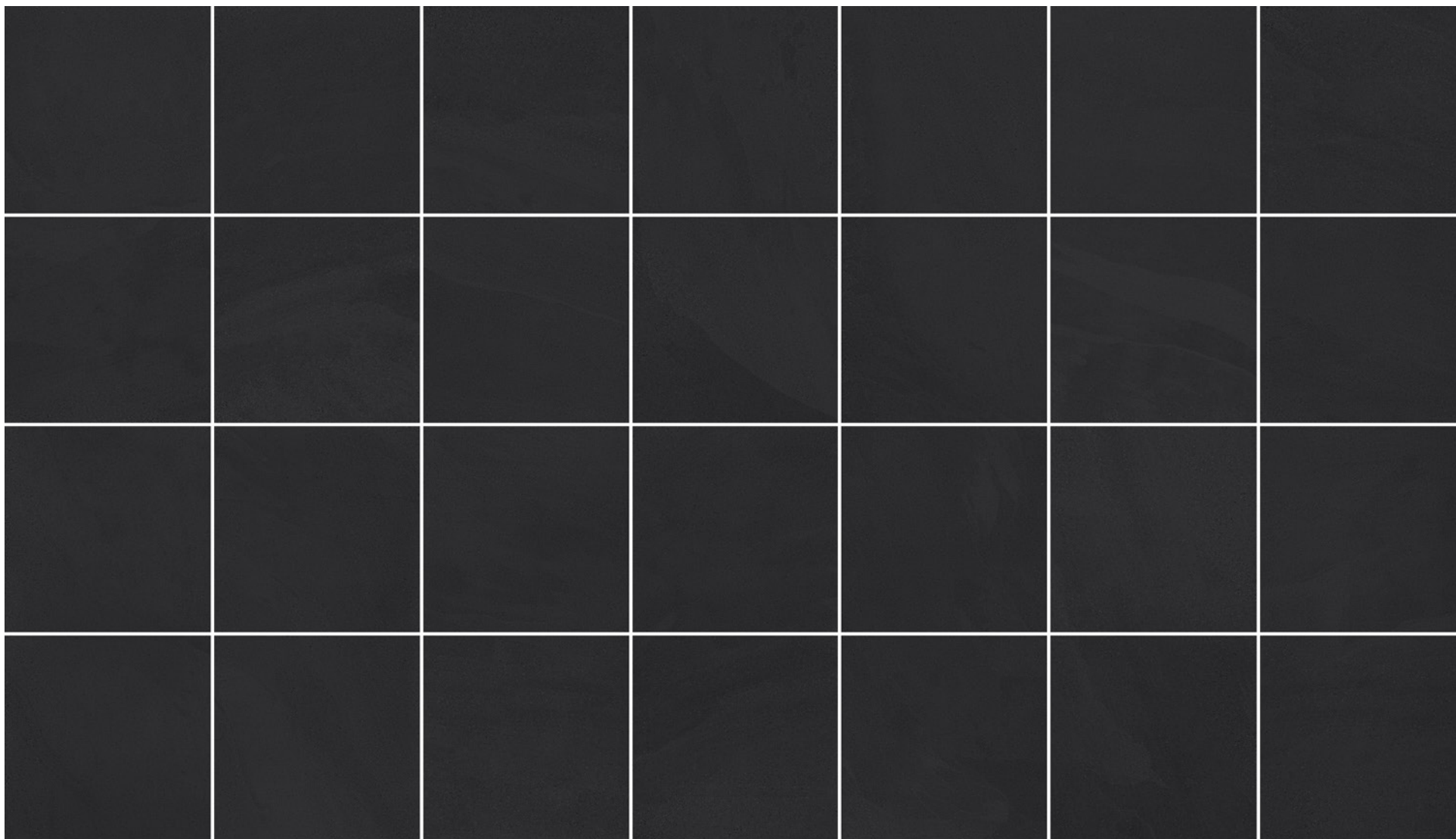
Buxi

GREY VARIATION



Buxi

BLACK VARIATION



Buxi



TECHNICAL DATA

Technical Characteristic	Test Method	Requirement	Result
Surface quality	ISO 10545-2	95%	100%
Length and Width	ISO 10545-2	± 0,6%	0.5%
Thickness	ISO 10545-2	± 0,5	± 0,5
Straightness of sides	ISO 10545-2	± 0,5%	± 0,3%
Water Absorbion	ISO 10545-3	≤ 3%	≤ 3%
Modulus of Rupture	ISO 10545-4	≥ 35	≥ 38
Breaking Strength	ISO 10545-4	≥ 1100	≥ 1300
Crazing Resistance	ISO 10545-11	Pass	Resistant
Chemical Resistance	ISO 10545-13	Declared Value	ULA / UHB
Stain Resistance	ISO 10545-14	Minimum Class 3	Class 5

Please note that all products must be fabricated using score & snap method and/or wet cutting in conjunction with AS/NZS 1716:2012, AS/NZS 1715:2009, AS/NZS 60335.2.69:2017* For more information please refer to: <https://www.safework.nsw.gov.au>

Variation is an inherent property of tiles and stone. Sizes are nominal and may include a joint.