

Textile



TEXTILE combines subtle textured patterns with a modern colour palette which are perfect for feature walls.

PRODUCT TYPE: Ceramic Wall Tile

COLOURS: White, Grey and Aqua

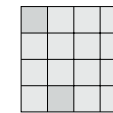
SIZES: 120x180mm
Non-Rectified Edges

FINISHES/USAGE: Textured (Wall only)

AESTHETIC QUALITIES: Pattern, textile, textured look

TECHNICAL DATA: More technical data on last page

VARIATION:



V2

CERTIFICATIONS:



EMAS

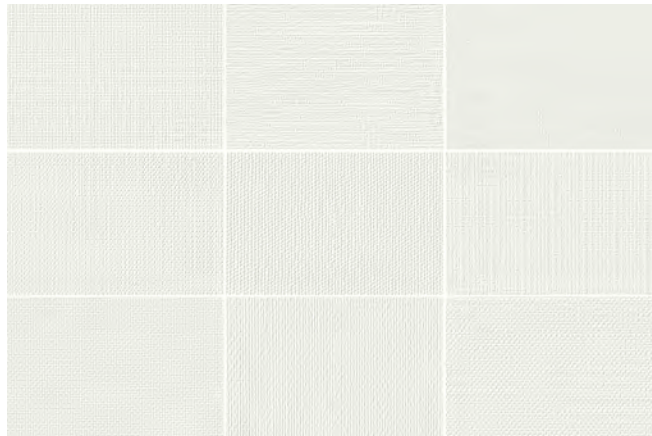
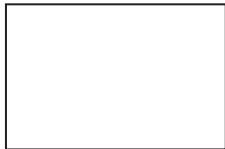
Textile

PRODUCT SPECIFICATIONS

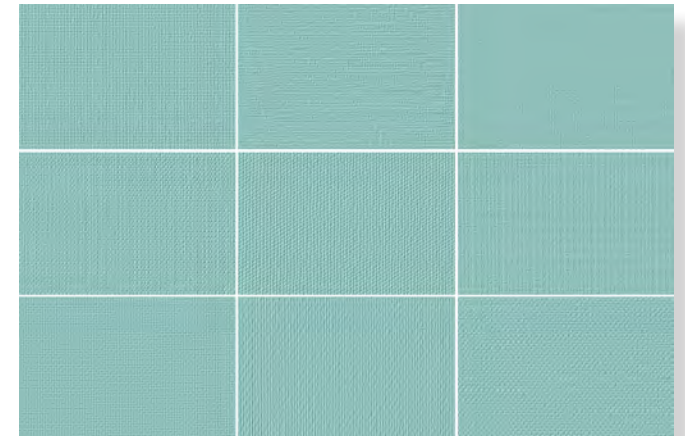
SIZES	FINISHES	TILE EDGE
120x180mm	TEXTURED	NON-RECTIFIED

NB This product comes in a variety of textures, and comes pre-mixed in the box

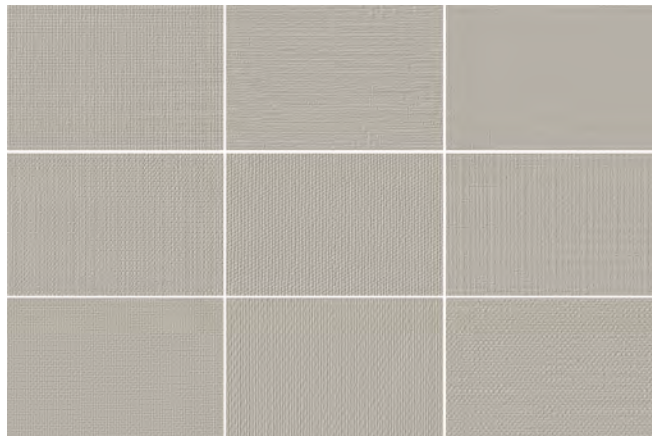
FORMATS



TEXTILE WHITE TEXTURED



TEXTILE AQUA TEXTURED



TEXTILE GREY TEXTURED

Textile








Textile



Textile

TECHNICAL DATA

technical characteristics	test method	required values	value
 water absorption	iso 10545-3	> 10%	> 10%
 bending strength	iso 10545-4	≥ 7,5mm R ≥ 12 N/mm ² < 7,5mm R ≥ 15 N/mm ²	R ≥ 17 N/mm ²
 breaking strength (S)	iso 10545-4	< 7,5mm S ≥ 200N ≥ 7,5mm S ≥ 600N	S ≥ 600N
 stain resistance	iso 10545-14	CLASS 3 MIN	5
 chemical resistance	iso 10545-13	Resistance to household chemicals: Class GB MIN Resistance to acids and alkalins at low concentration: Available Method	GA GLA

CERTIFICATIONS



Italian GREEN BUILDING COUNCIL, the association of top players working to transform the building market towards sustainability and to build liveable communities. GBC Italian members promote environmental, economic and social responsibility, innovating buildings in terms of engineering, design, manufacturing and use.



LEED (Leadership in Energy and Environmental Design) is an internationally recognized green building certification system, providing third-party verification that a building or community was designed and built using strategies aimed at improving performance across all the metrics that matter most: energy savings, water efficiency, CO2 emissions reduction, improved indoor environmental quality, and stewardship of resources and sensitivity to their impacts.



ISO 14001:2015 specifies the requirements for an environmental management system that an organization can use to enhance its environmental performance. ISO 14001:2015 is intended for use by an organization seeking to manage its environmental responsibilities in a systematic manner that contributes to the environmental pillar of sustainability.



Eco-Management and Audit Scheme (EMAS) Registration. This is an important recognition of a European level that aim at the continuous improvement of production standards and awareness of all its employees in terms of protecting the environment. The EMAS system is a voluntary awareness for those companies committed to evaluating and improving their environmental efficiency through a more responsible choice of buying and management, a more careful use of air, water, territory, raw materials and energy.