

Cotto



Made in Italy, COTTO Series is a modern twist on traditional Mediterranean cotto flooring. Featuring a soft textured surface and warm tones, COTTO is available in both a matt and grip finish and contemporary sizes, allowing it to be a versatile indoor/outdoor tile.

PRODUCT TYPE: Glazed Porcelain Floor Tile

COLOURS: Neutra, Aldea, Cuero and Arcilla

SIZES: 75x300mm and 600x600mm
Rectified edges

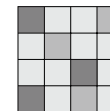
FINISHES/USAGE: Matt and Grip
Floor and wall

AESTHETIC QUALITIES: Warm Mediterranean colours

TECHNICAL INFO: P3 Pendulum Slip Rating (Matt)
P5 Pendulum Slip Rating (Grip)
More technical info on the last page

ORIGIN: Italy

VARIATION:



V3

CERTIFICATIONS:

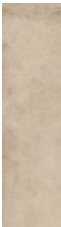
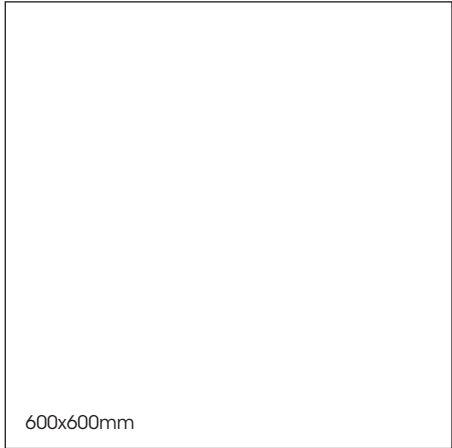


Cotto

PRODUCT SPECIFICATIONS

SIZES	FINISHES	SLIP RATING	TILE EDGE
75x300mm	MATT	P3 Pendulum	RECTIFIED
600X600mm	MATT	P3 Pendulum	RECTIFIED
600X600mm	GRIP	P5 Pendulum	RECTIFIED

FORMATS



NEUTRA MATT



NEUTRA GRIP



ALDEA MATT



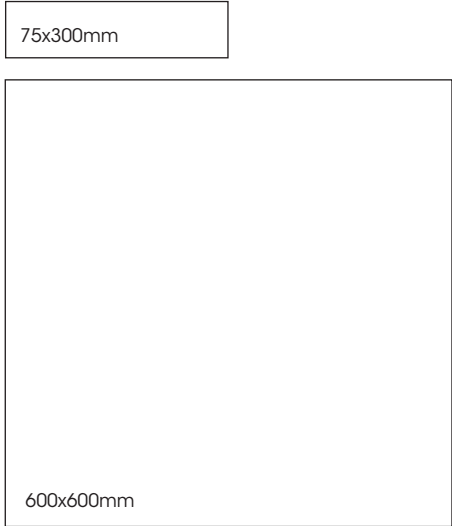
ALDEA GRIP

Cotto

PRODUCT SPECIFICATIONS

SIZES	FINISHES	SLIP RATING	TILE EDGE
75x300mm	MATT	P3 Pendulum	RECTIFIED
600X600mm	MATT	P3 Pendulum	RECTIFIED
600X600mm	GRIP	P5 Pendulum	RECTIFIED

FORMATS



CUERO MATT



CUERO GRIP

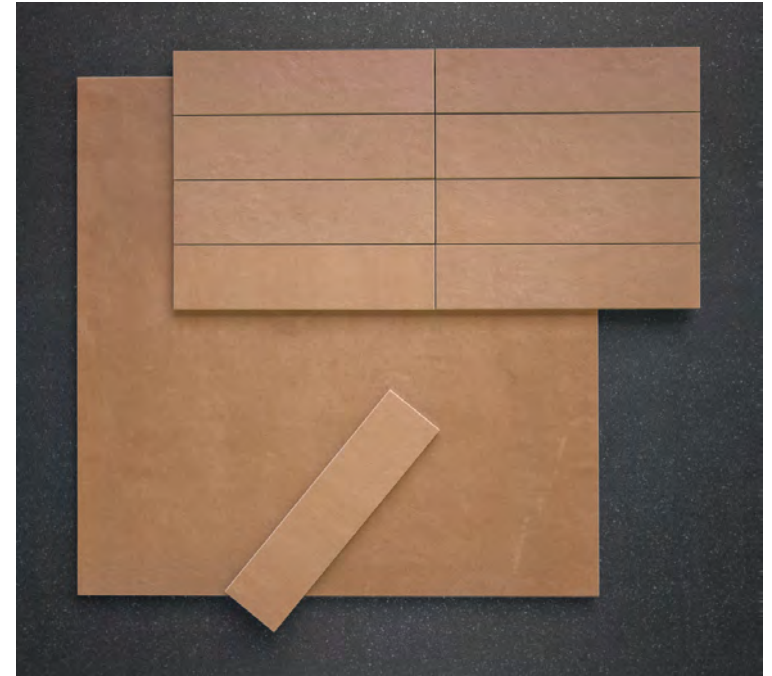
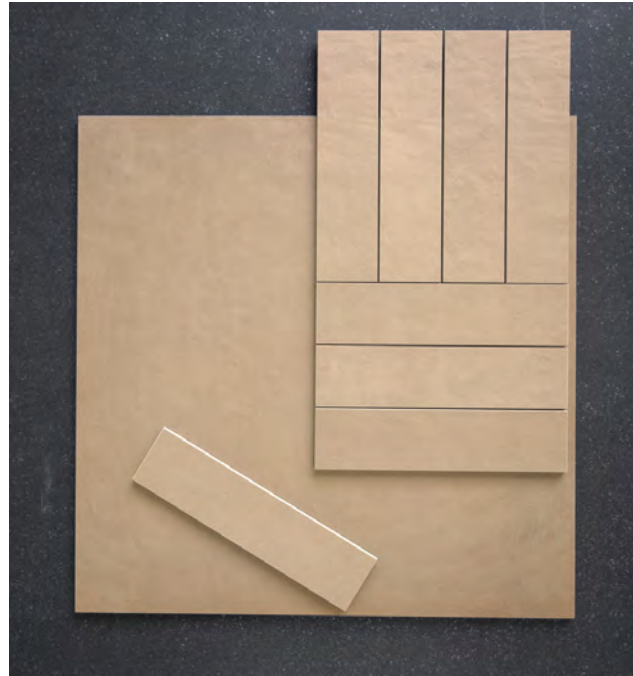
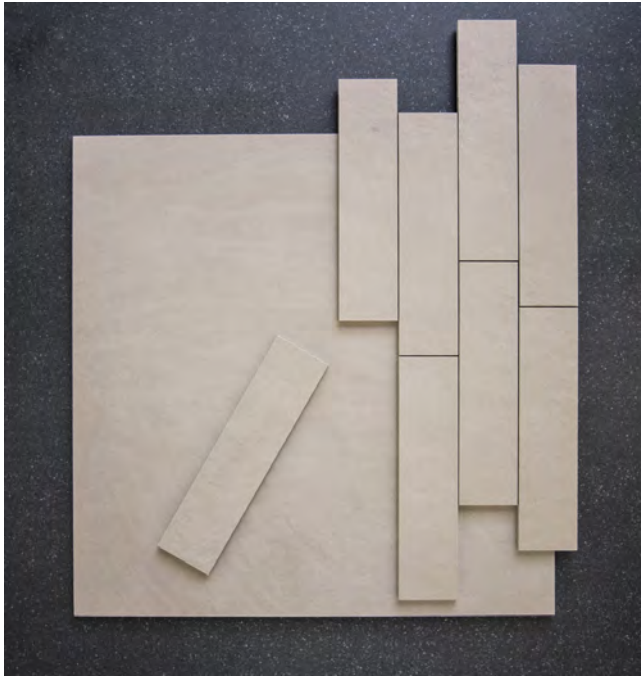


ARCILLA MATT



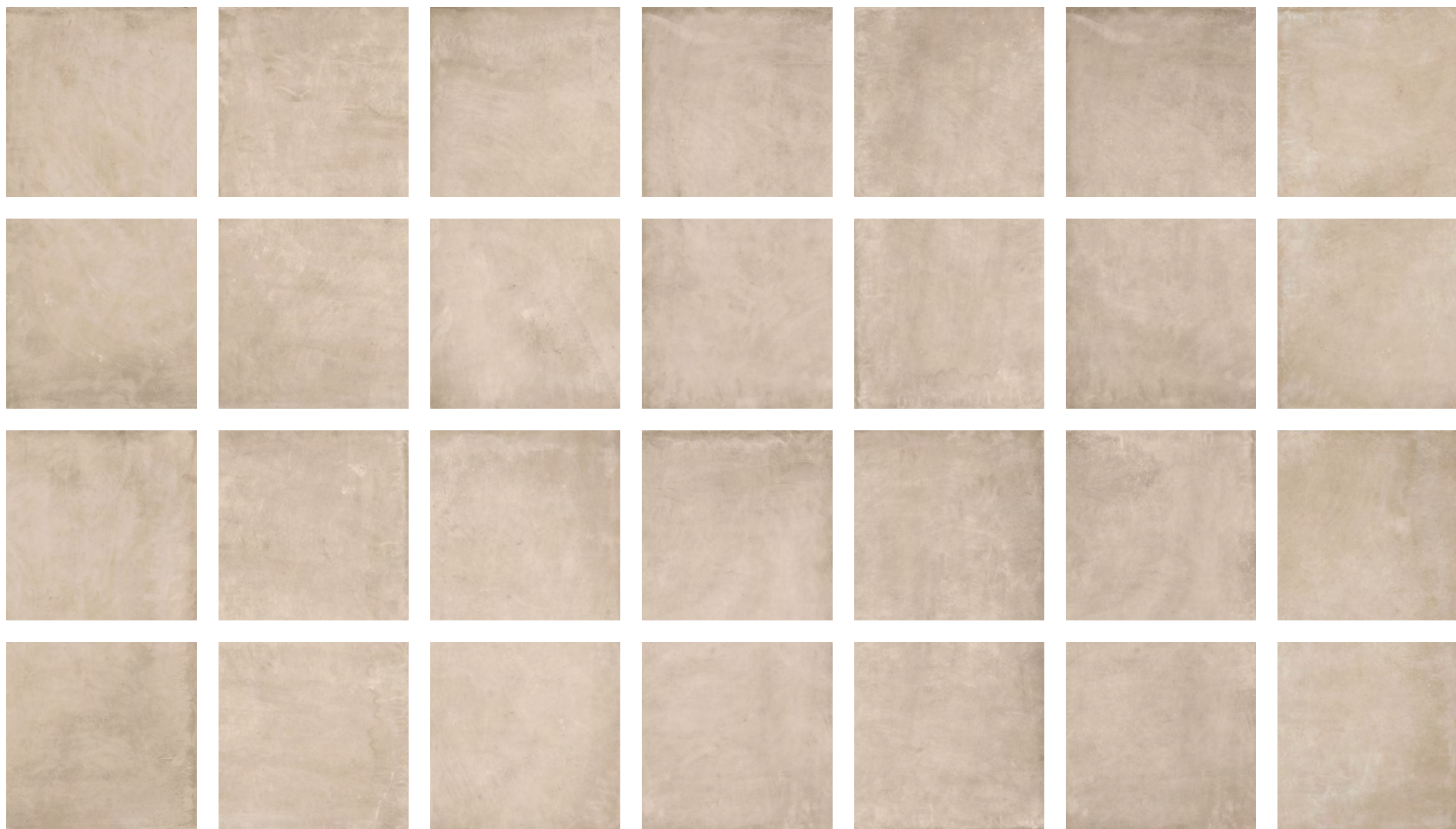
ARCILLA GRIP

BRICK FLATLAY EXAMPLES



Cotto

NEUTRA VARIATION



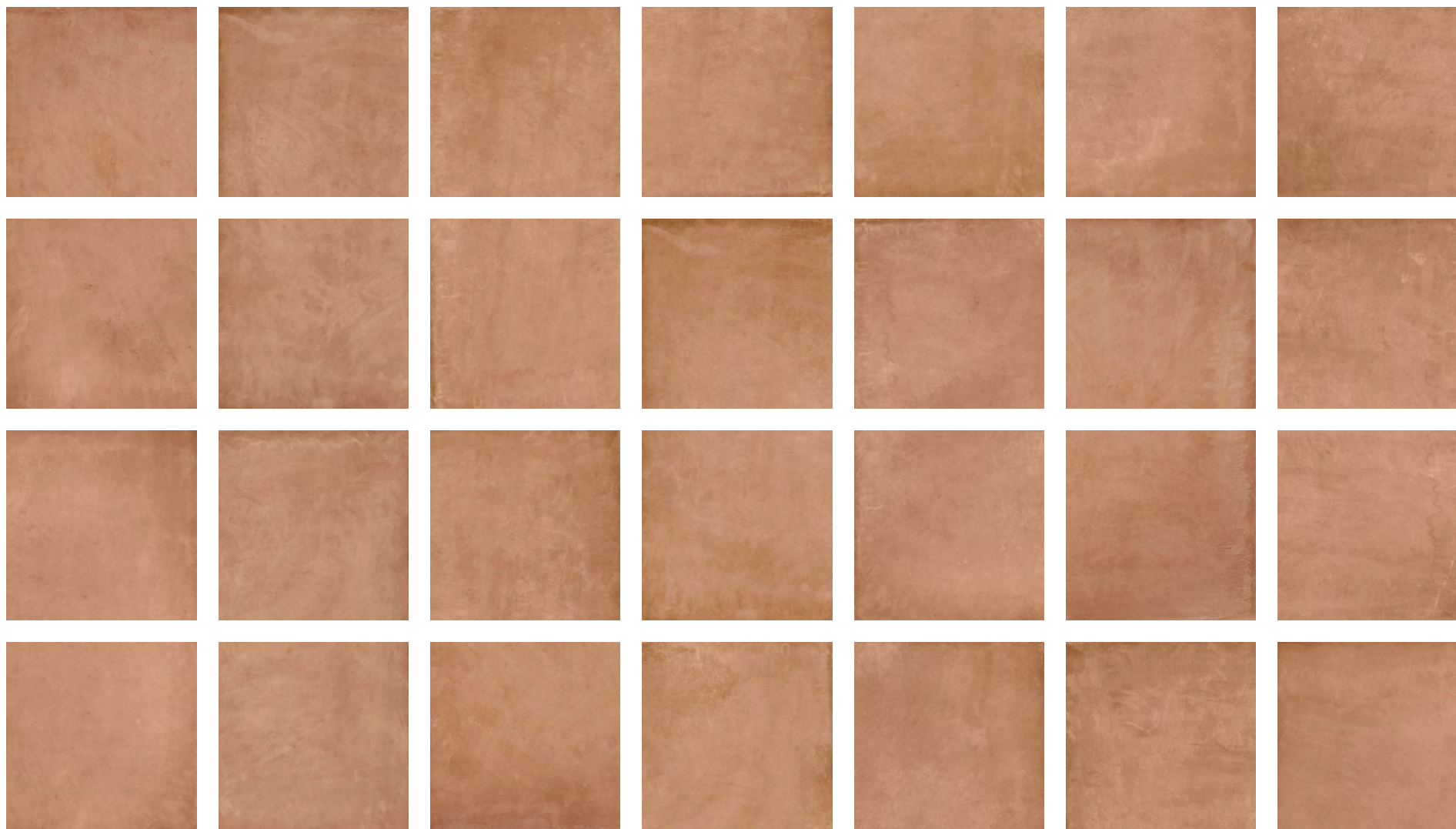
Cotto

ALDEA VARIATION



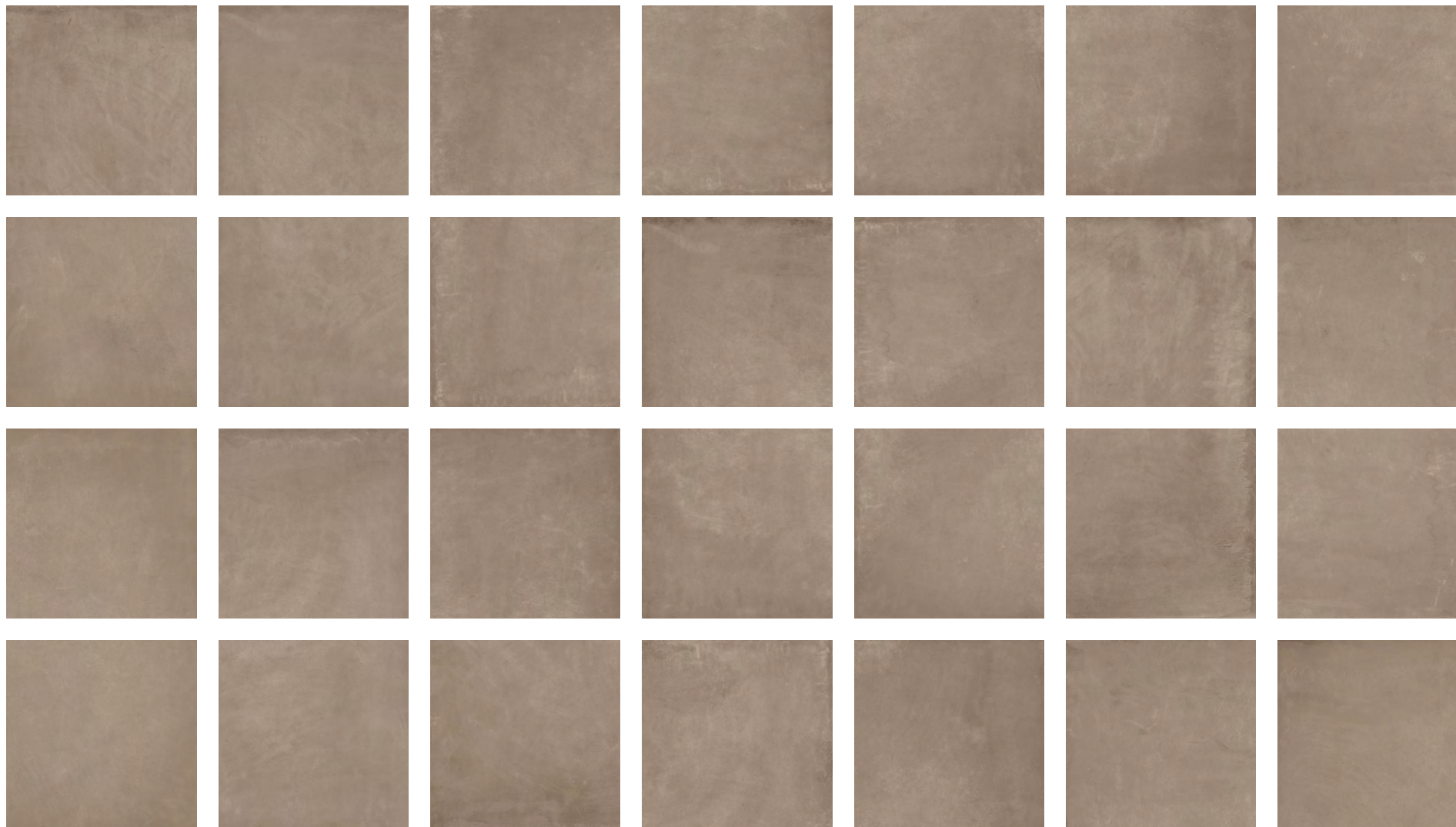
Cotto

CUERO VARIATION



Cotto

ARCILLA VARIATION



Cotto



Cotto











Cotto



Cotto



TECHNICAL DATA

	technical characteristics	test method	required values	result
	water absorption	ISO 10545-3	≤0.5%	≤0.2%
	modulus of rupture	ISO 10545-4	≥ 35 N/mm ²	compliant
	surface quality	ISO 10545-2	Complies with the standards	≥95%
	thermal shock resistance	ISO 10545-9	No sample must show visible defects	compliant
	deep abrasion resistance	ISO 10545-6	≤ 175 mm ³	compliant
	chemical resistance	ISO 10545-13	Declared value	compliant
	resistance to frost	ISO 10545-12	Resistant	compliant
	staining resistance	ISO 10545-14	Minimum Class 3	compliant

CERTIFICATIONS



LEED (Leadership in Energy and Environmental Design) is an internationally recognized green building certification system, providing third-party verification that a building or community was designed and built using strategies aimed at improving performance across all the metrics that matter most: energy savings, water efficiency, CO2 emissions reduction, improved indoor environmental quality, and stewardship of resources and sensitivity to their impacts.



EPD (Environmental Product Declaration) assessed its products' environmental impact throughout their life cycle, from extraction and processing of the raw materials through to the recycling of demolition spoil. The findings of this LCA (Life Cycle Assessment), performed in accordance with the ISO 14040 series international standards, have been published in the Environmental Product Declaration (ISO 14025 and EN 15804), contributing to the attainment of LEED.



A Product Environmental Footprint (PEF) is a new method for measuring sustainability performance developed by the European Commission in cooperation with companies and sustainability experts.

The aim is to improve the validity and comparability of the environmental performance evaluation compared to existing methods.

The PEF makes it possible to determine all relevant environmental and health impacts as well as resource-related burdens caused by a product. For the calculation, the entire life cycle of the products is considered, from raw material procurement to disposal.