

Slimtech Re-Evolution



Imported from Italy, RE-EVOLUTION porcelain slabs have a concrete trowel look with a high honed smooth finish.

PRODUCT TYPE: 3.5mm fibreglass reinforced lightweight porcelain

COLOURS: Latte, Concrete, Grey and Charcoal

SIZES: 500x1000x3.5mm, 1000x1000x3.5mm and 1000x3000x3.5mm
Rectified edges

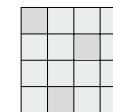
FINISHES/USAGE: Satin/Wall and floor

AESTHETIC QUALITIES: Porcelain slabs

TECHNICAL DATA: More technical data on the last page.

ORIGIN: Italy

VARIATION:



V2

CERTIFICATIONS:



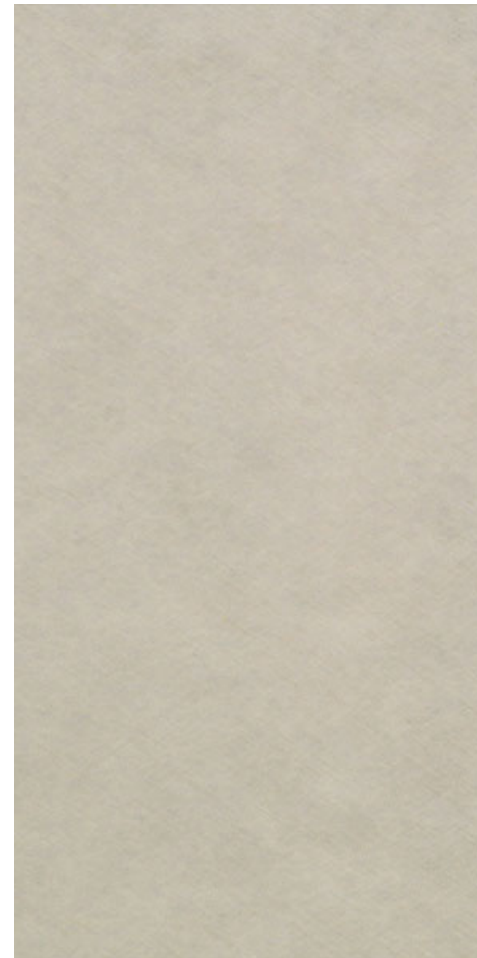
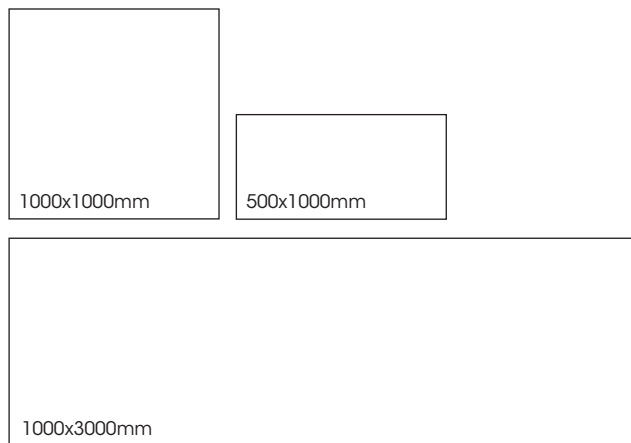
Slimtech Re-Evolution

PRODUCT SPECIFICATIONS

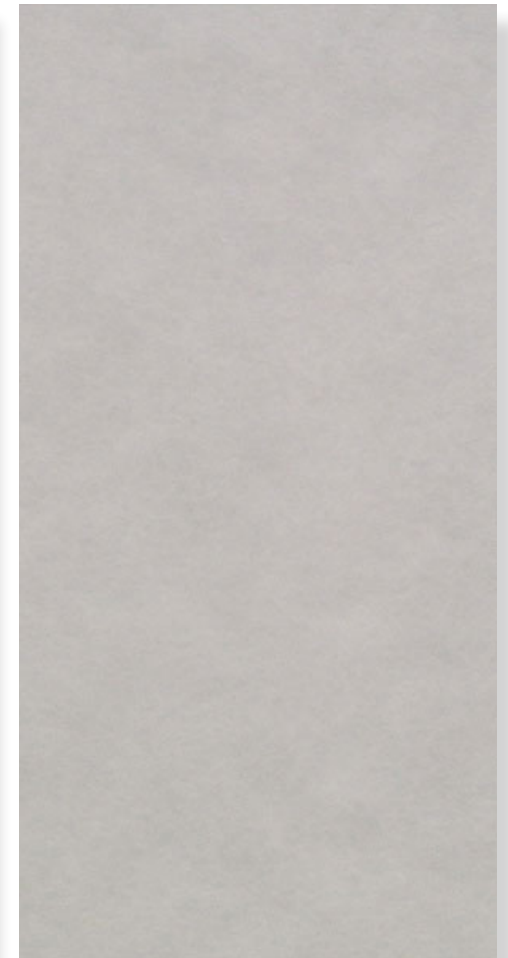
SIZES	FINISHES	TILE EDGE
500X1000x3.5mm*	SATIN	RECTIFIED
1000X1000x3.5mm*	SATIN	RECTIFIED
1000X3000x3.5mm*	SATIN	RECTIFIED

* Indent item - Subject to stock availability overseas, please allow 10-12 weeks lead time from date of order confirmation. Minimum quantity may apply.

FORMATS



LATTE SATIN



CONCRETE SATIN

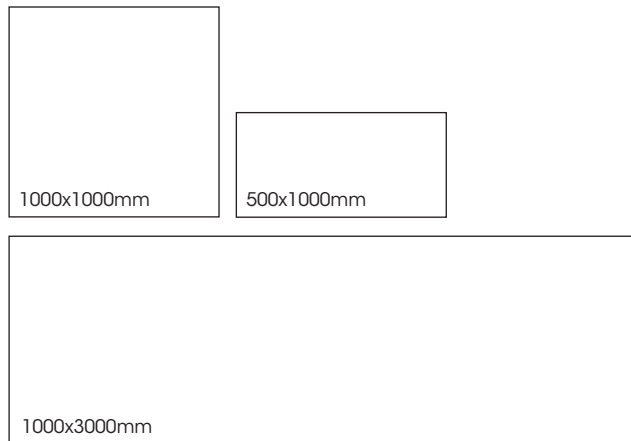
Slimtech Re-Evolution

PRODUCT SPECIFICATIONS

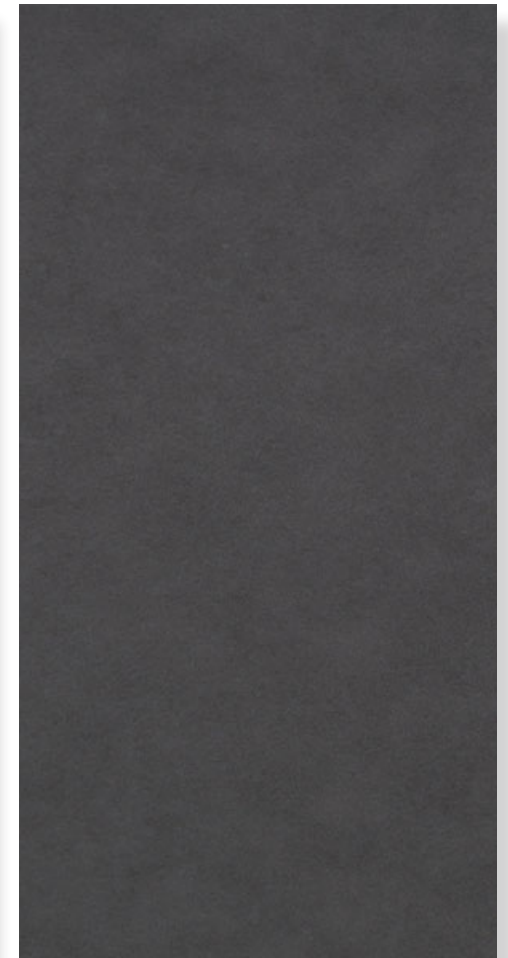
SIZES	FINISHES	TILE EDGE
500X1000x3.5mm*	SATIN	RECTIFIED
1000X1000x3.5mm*	SATIN	RECTIFIED
1000X3000x3.5mm*	SATIN	RECTIFIED

* Indent item - Subject to stock availability overseas, please allow 10-12 weeks lead time from date of order confirmation. Minimum quantity may apply.

FORMATS



GREY SATIN



CHARCOAL SATIN

Slimtech Re-Evolution



Slimtech Re-Evolution



Slimtech Re-Evolution

LARGE FORMAT | STRENGTH | DURABILITY | EASY MAINTENANCE | LIGHT WEIGHT | RENOVATIONS MADE EASY

Laminated porcelain stoneware with a fiberglass backing allows for tension to be spread evenly, thus making this extremely strong for a thin porcelain slab.

Large formats (up to 1000x3000mm) allow for fewer grout joints, which offers the visual advantage of making spaces look larger.

Lightweight format means Slimtech's application is versatile: splash backs, walls, bench tops, joinery and facades.

Latest technology in porcelain stoneware creates a surface flatness second to none.

Slabs are only 3.5mm thick making them easy to cut, drill and install.

Easy to renovate over existing wall and floors tiles (surface/substrate must be flat) saving on demolition and labour costs.

Resistant to stains and chemical agents making it easy to clean and maintain. No sealing required.

Slimtech is eco friendly - uses less materials, environmentally friendly kilns and there is more square metres per shipment .

3.5mm thickness is 8.5kgs per square metre.






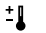


POLISHED FINISH SUITABLE FOR WALL COVERINGS AND FLOORS IN RESIDENTIAL APPLICATIONS. SATIN FINISH SUITABLE FOR WALL COVERINGS AND FLOORS IN BOTH RESIDENTIAL AND LIGHT COMMERCIAL APPLICATIONS.

For more technical information about installation, cleaning and care, please download the SLIMTECH MANUAL PDF on our website.

Slimtech Re-Evolution

TECHNICAL DATA

laminated porcelain UGL

technical characteristics	test method	required values iso 13006 - G / en 14411 - G B1a ugl	value
 water absorption	iso 10545-3	≤ 0,5%	≤ 0,01%*
 frost resistance	iso 10545-12	no alterations	resistant
 bending strength	iso 10545-4	≥ 35 N/mm ²	≥ 120 N/mm ^{2**}
 breaking strength (S)	iso 10545-4	≥ 700 N	≥ 1000 N**
 resistance to deep abrasion	iso 10545-6	≤ 175 mm ³	compliant
resistance to compression	-	-	≥ 400 N/mm ²
 thermal shock resistance	iso 10545-9	resistant	resistant
 chemical resistance	iso 10545-13	as indicated by manufacturer	resistant
 stain resistance	iso 10545-14	≥ class 3	resistant

CERTIFICATIONS



The GREENGUARD Environmental Institute is an industry-independent organisation with a mission to improve indoor air quality and reduce people's exposure to chemicals and other pollutants. As an ISO-IEC Guide 65:1996 accredited, third-party organization, the GREENGUARD Environmental Institute certifies products and materials for low chemical emissions and provides a resource for choosing healthier products and materials for indoor environments. Certified products must meet chemical emissions standards based on established criteria from key public health agencies.



Italian GREEN BUILDING COUNCIL, the association of top players working to transform the building market towards sustainability and to build liveable communities. GBC Italian members promote environmental, economic and social responsibility, innovating buildings in terms of engineering, design, manufacturing and use.



LEED (Leadership in Energy and Environmental Design) is an internationally recognized green building certification system, providing third-party verification that a building or community was designed and built using strategies aimed at improving performance across all the metrics that matter most: energy savings, water efficiency, CO2 emissions reduction, improved indoor environmental quality, and stewardship of resources and sensitivity to their impacts.